



Enriching Lives

Kirloskar KFP Series Engines For Fire Pumps FM Approved & UL Listed



Contents:

1. FM/UL Approved Power rating
2. Typical Features of FM/UL Approved engines
3. Fuel system
4. Cooling system
5. Instrumentation



FM/UL Approved Power rating



Enriching Lives

Sr. No.	Kirloskar FM/UL Approved Engine Model	Engine Speed	Rated Power
		RPM	kW
1	KFP4R-UF07	1760	46
		2100	52
		2200	55
		2350	55
		2600	57
2	KFP4R-UF15	1760	80
		2100	83
		2200	87
		2350	106
		2600	112
3	KFP6R-UF25	1760	126
		2100	142
		2200	146
		2350	151
		2600	168
4	KFP6S-UF35	1760	215
		2100	250
		2200	247
		2350	246



Typical Features

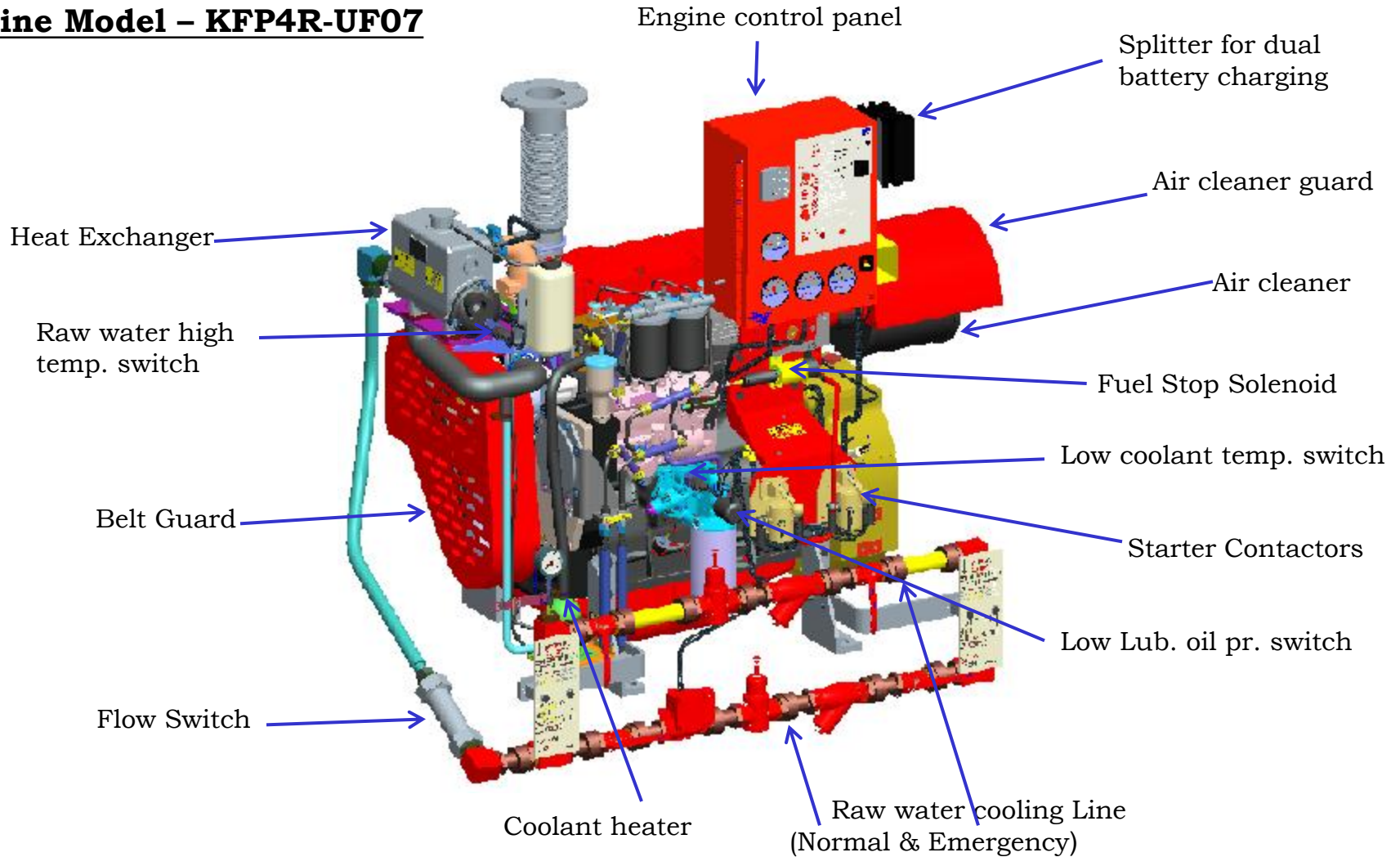


Enriching Lives

- Heat exchanger for Engine coolant
- Water Cooled Charge Air cooler for After-cooled engine models
- FM approved Cooling Loop with Flow switch, Raw water solenoids, manual valves in main & emergency lines as per NFPA 20 requirements
- Engine mounted Instrument Panel duly isolated from vibration
- Junction Box Integral with Instrument Panel for AC Wiring
- Engine coolant heater
- Engine High coolant temp. switch, Low coolant temp. switch, Raw water high temp. switch, Low lub. oil pressure switch & Over speed shut down.
- Dual Starter Contactors (DC)
- Splitter for splitting the charging current coming from alternator to dual battery
- Electronic speed controller
- Heat shield on Exhaust Manifold, Turbo Charger & CAC Pipes
- Fire Resistant Flexible Supply & Return Lines in Fuel connections

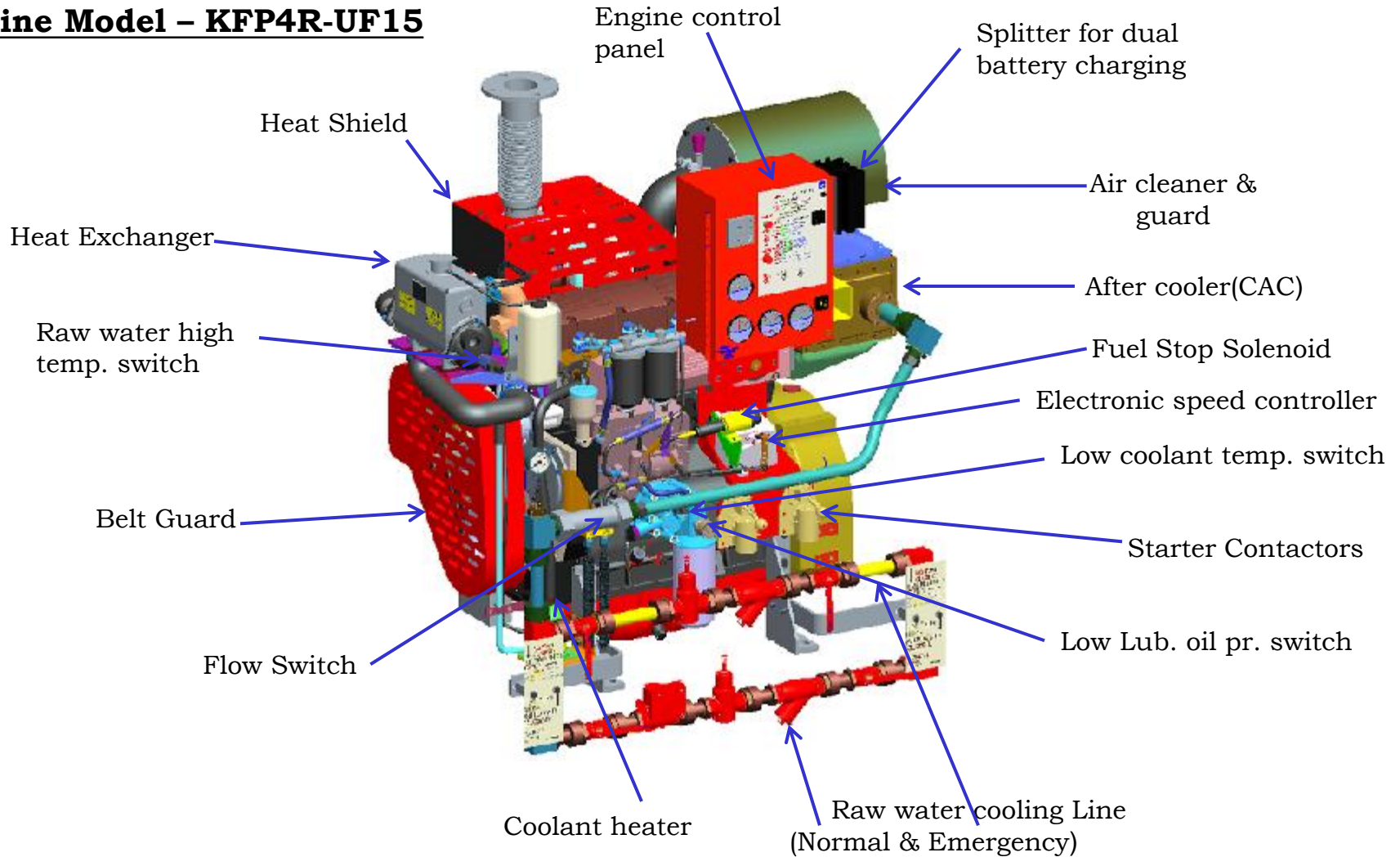
Typical Features

Engine Model – KFP4R-UF07



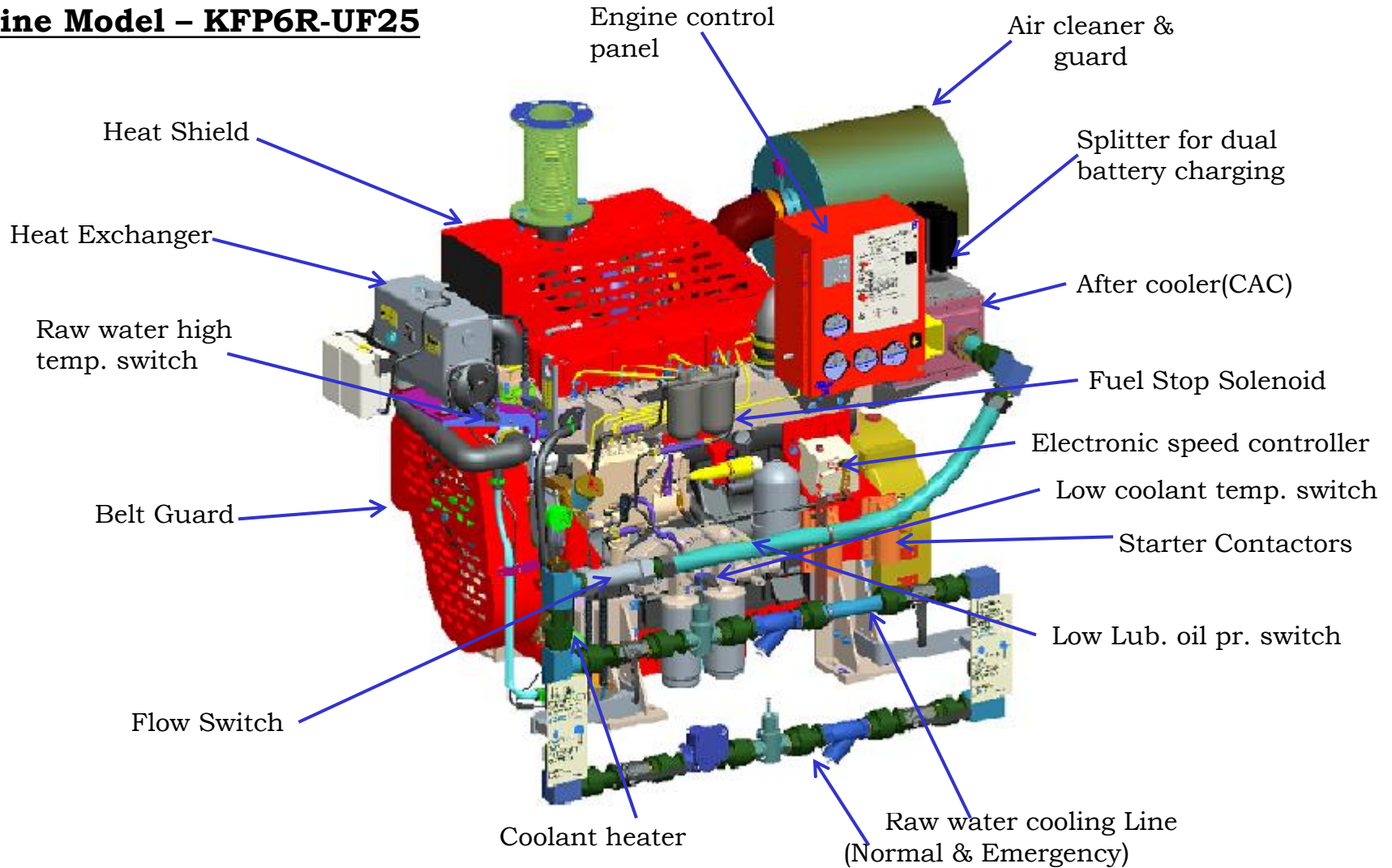
Typical Features

Engine Model – KFP4R-UF15



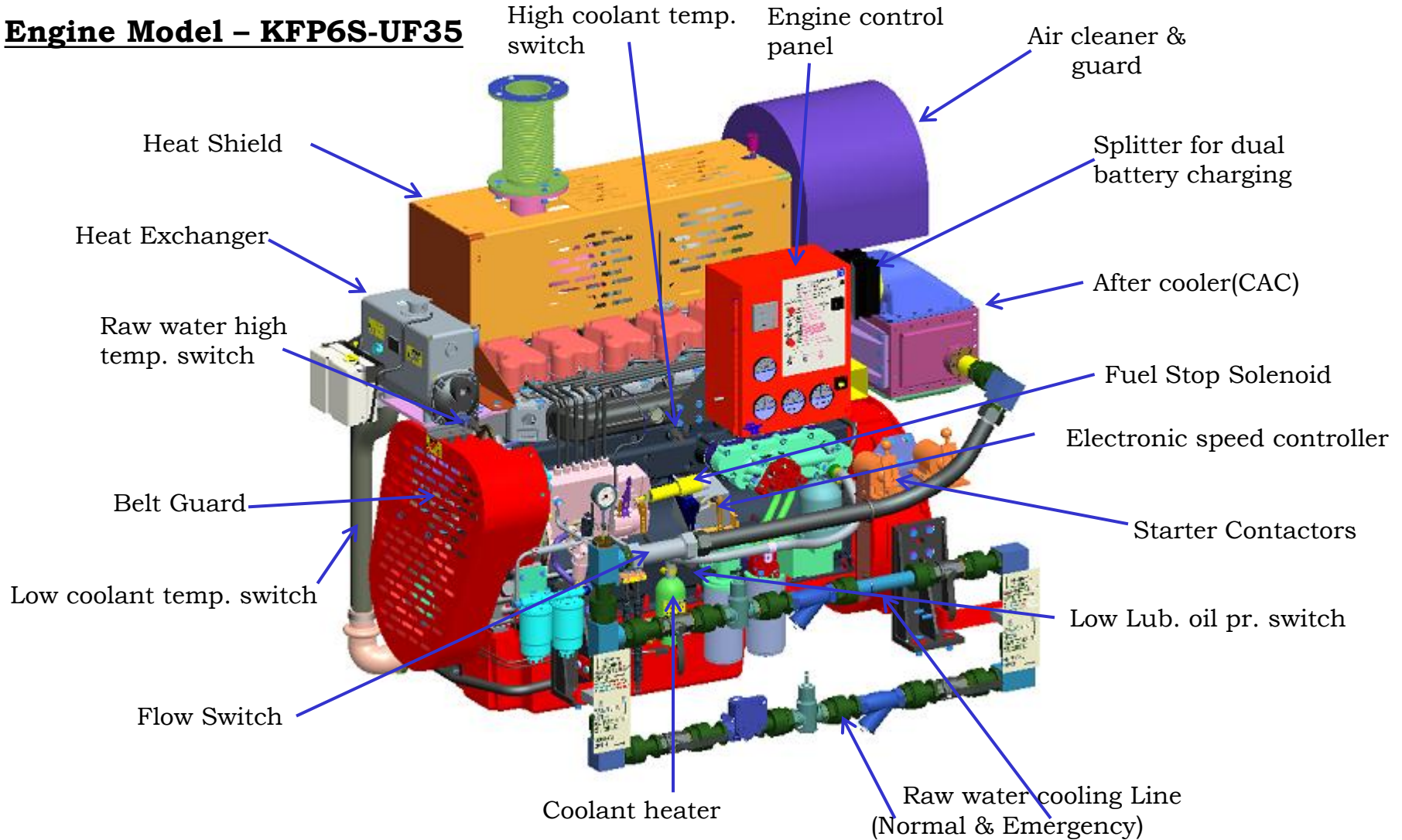
Typical Features

Engine Model – KFP6R-UF25

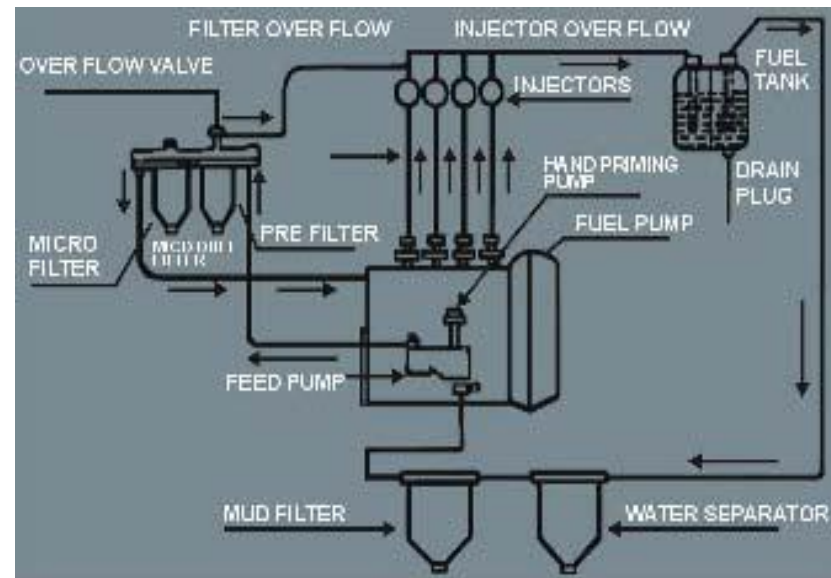


Typical Features

Engine Model – KFP6S-UF35



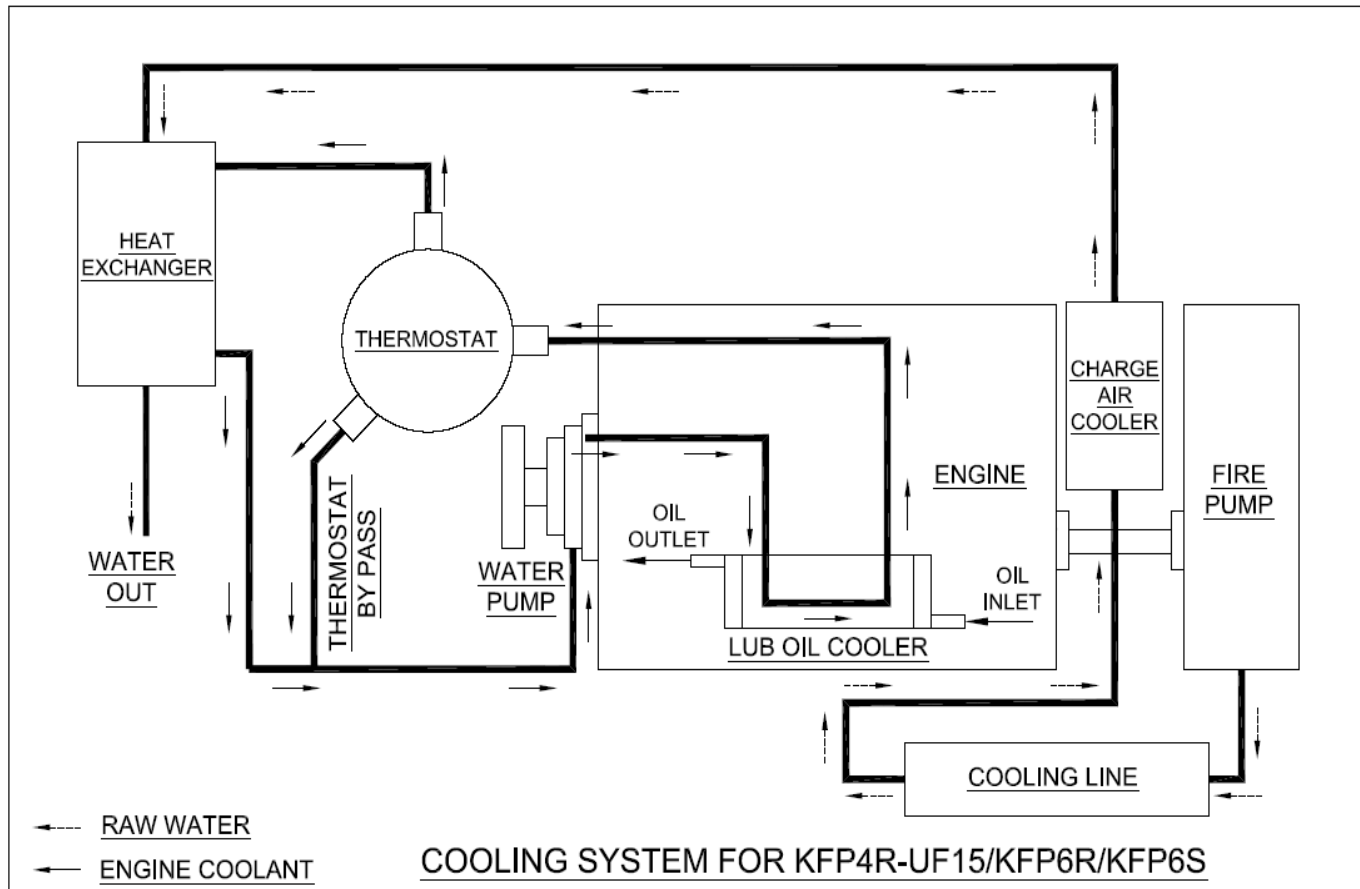
- A lift pump (feed pump) incorporated in the fuel injection pump is used to pick up the diesel from the tank
- Two stages of filters (a pre-filter and a micro paper filter) ensures the cleanliness of fuel before it is supplied to the fuel injection pump
- The schematic diagram shows the fuel circuit of the engine
- The following specifications are approved
 - ASTM D975 – 2003: 1D, 2D & 4D



ENGINE COOLING SYSTEM

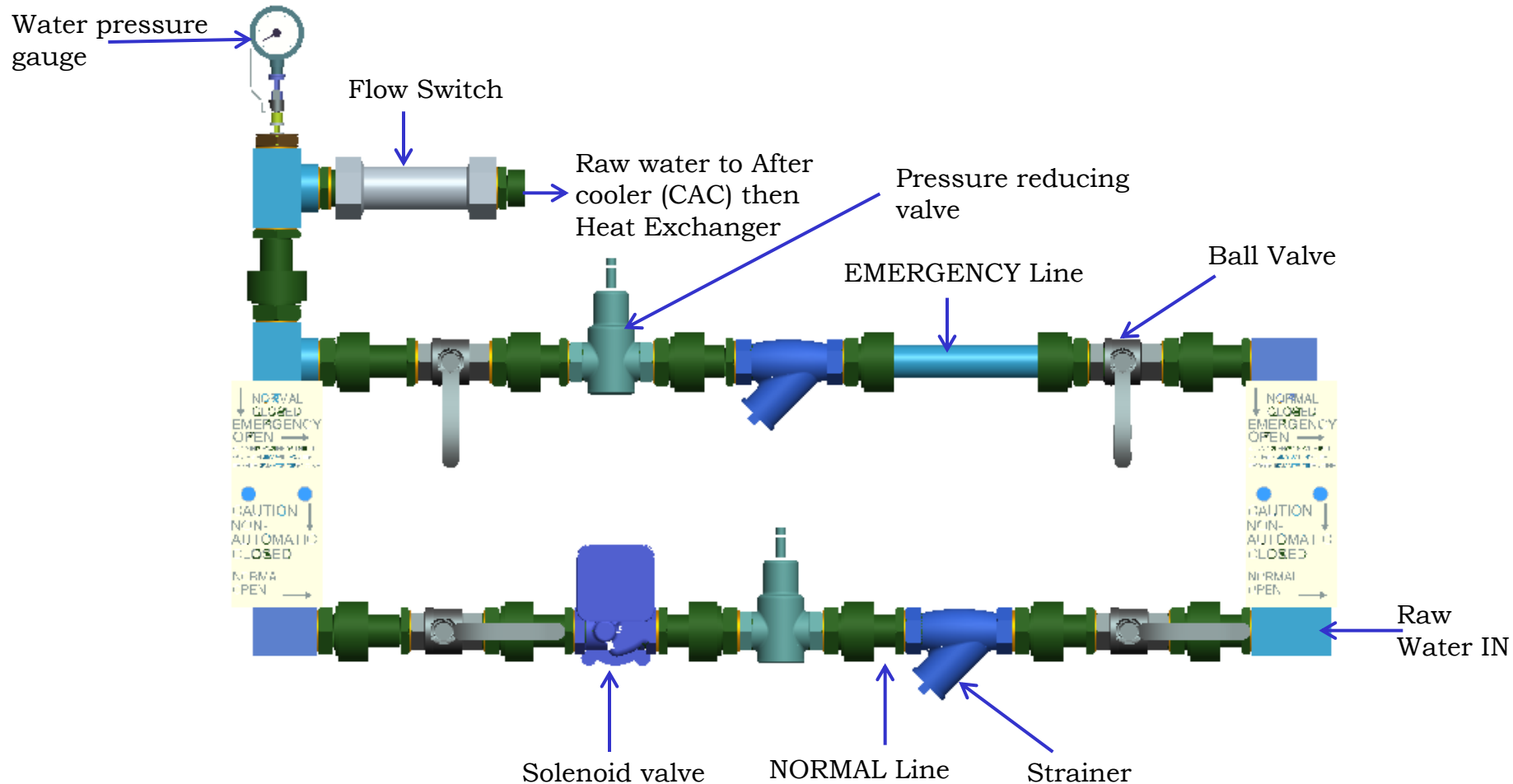
Heat exchanger type cooling system:

- The Schematic diagram of the typical water circuit with Heat exchanger type cooling for turbocharged with after-cooled engines is shown below:



Cooling Line Layout :

- The typical Raw water flow diagram with Heat exchanger type cooling is shown below:



- The instrument panel is Engine mounted and is fitted on Anti Vibration Mounts
- The instrument Panel consists of the following:
 - Tachometer & Hour-meter
 - Voltmeters (2)
 - Water Temperature Gauge
 - Oil Pressure Gauge
 - Over Speed Indication lamp
 - Auto / Manual modes
 - Auto Mode Warning lamp
 - Manual Crank toggle switches (2)
 - Manual Stop toggle switch



Enriching Lives

THANK YOU!