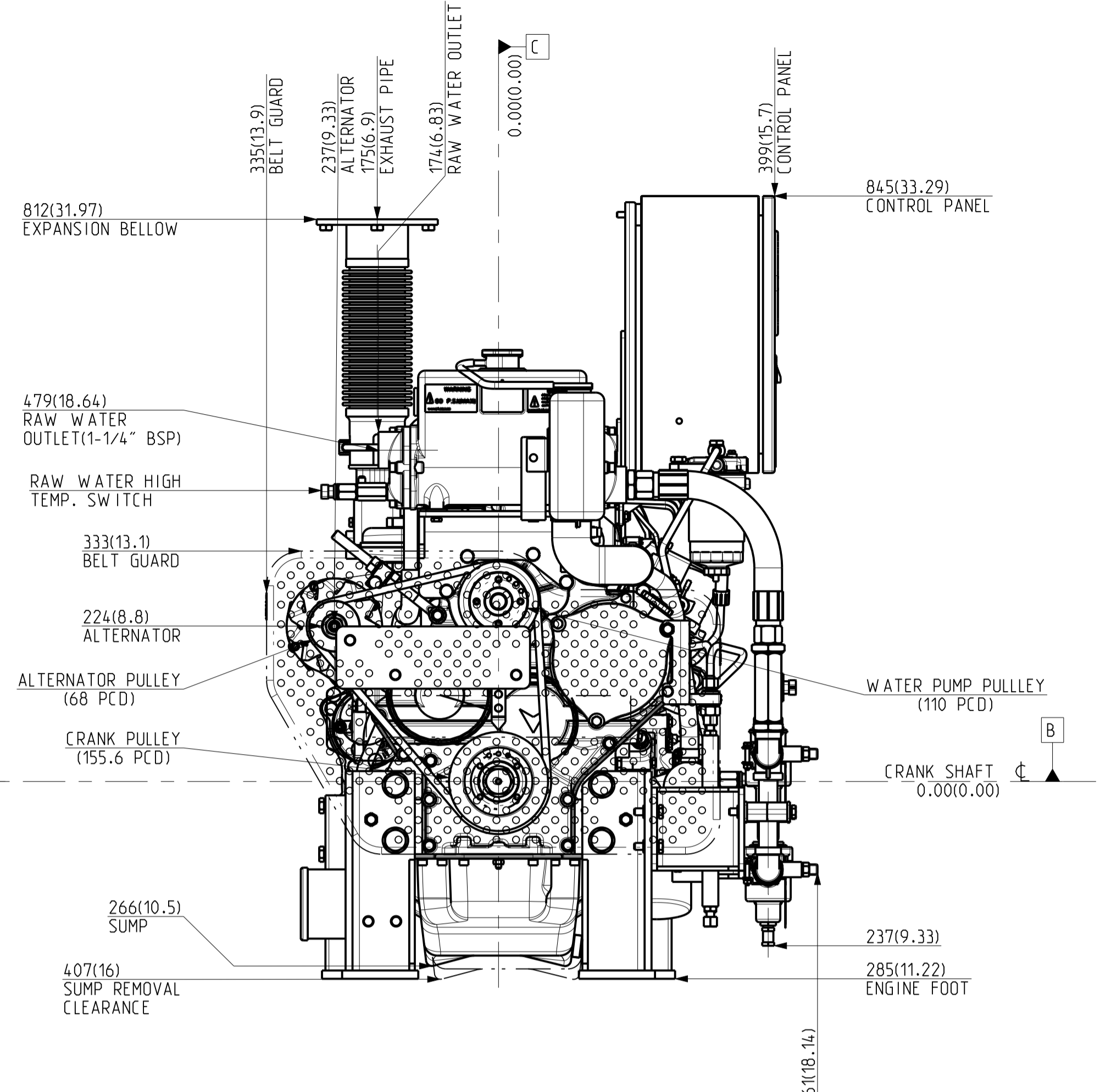
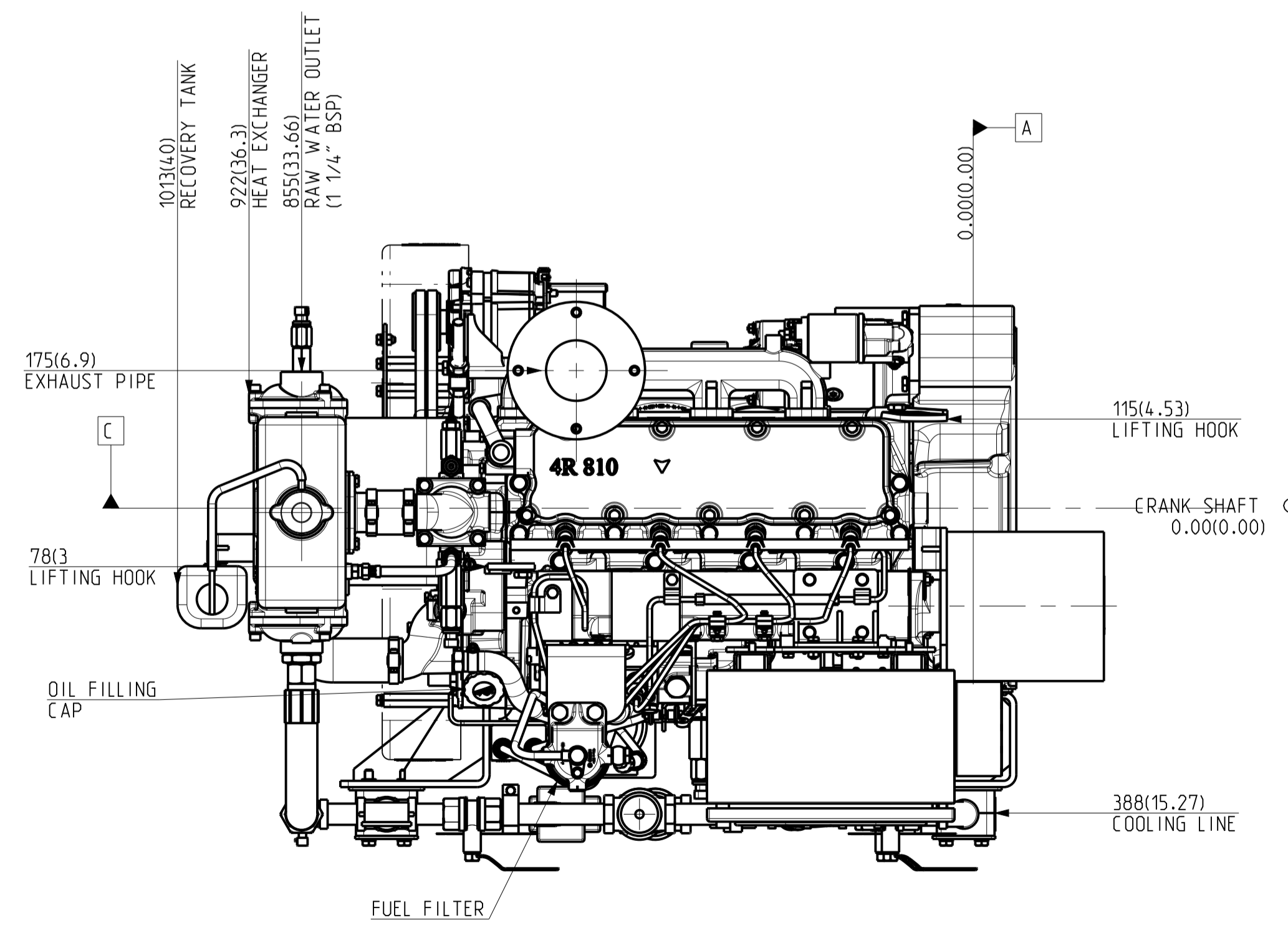


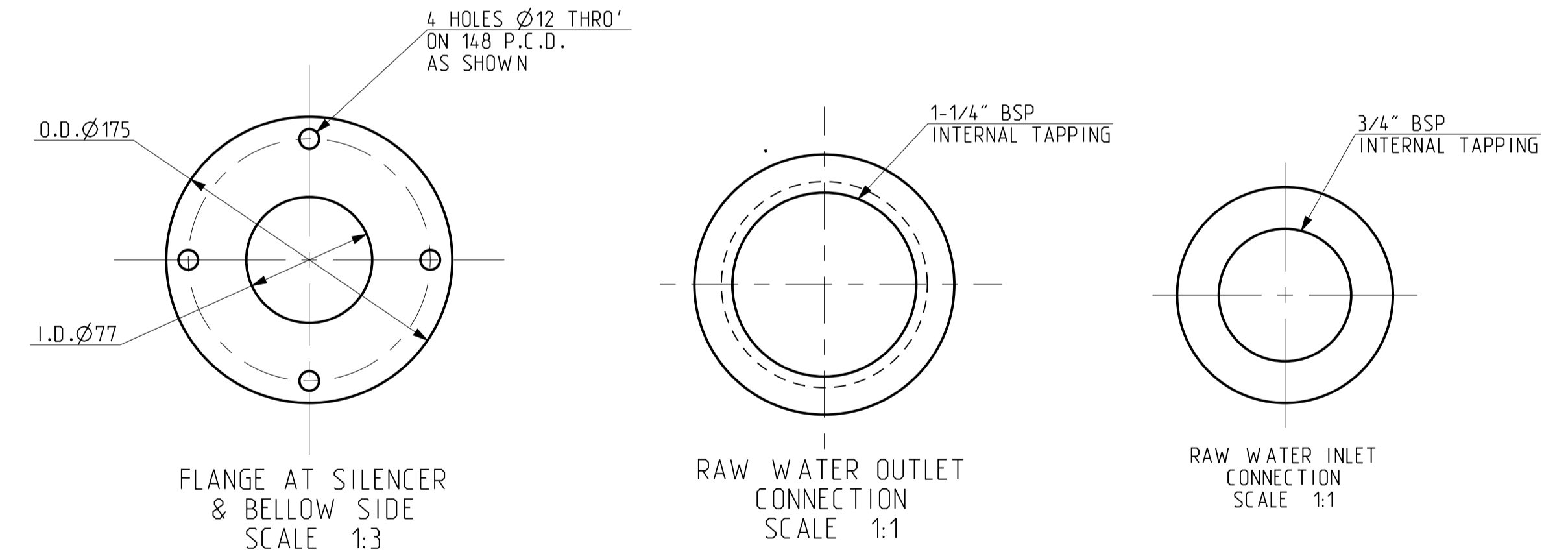
VIEW FROM FUEL PUMP SIDE



VIEW FROM GEAR END SIDE



VIEW FROM TOP SIDE



NOTES:
 *ALL DIMENSIONS SHOWN ARE IN MM AND IN BRACKET ARE IN INCHES.

DATUMS:
 [A] MOUNTING FACE OF FLYWHEEL
 [B] ENGINE CRANK SHAFT HORIZONTAL CENTRE LINE
 [C] ENGINE CRANK SHAFT VERTICAL CENTRE LINE

LIFECYCLE STATE:- Released

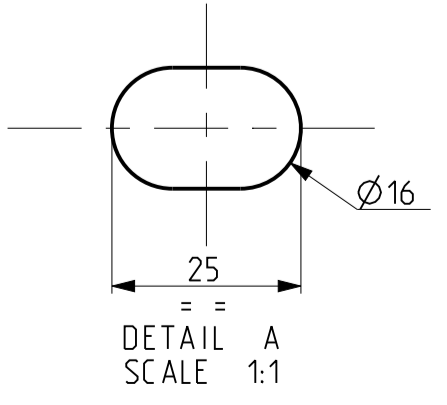
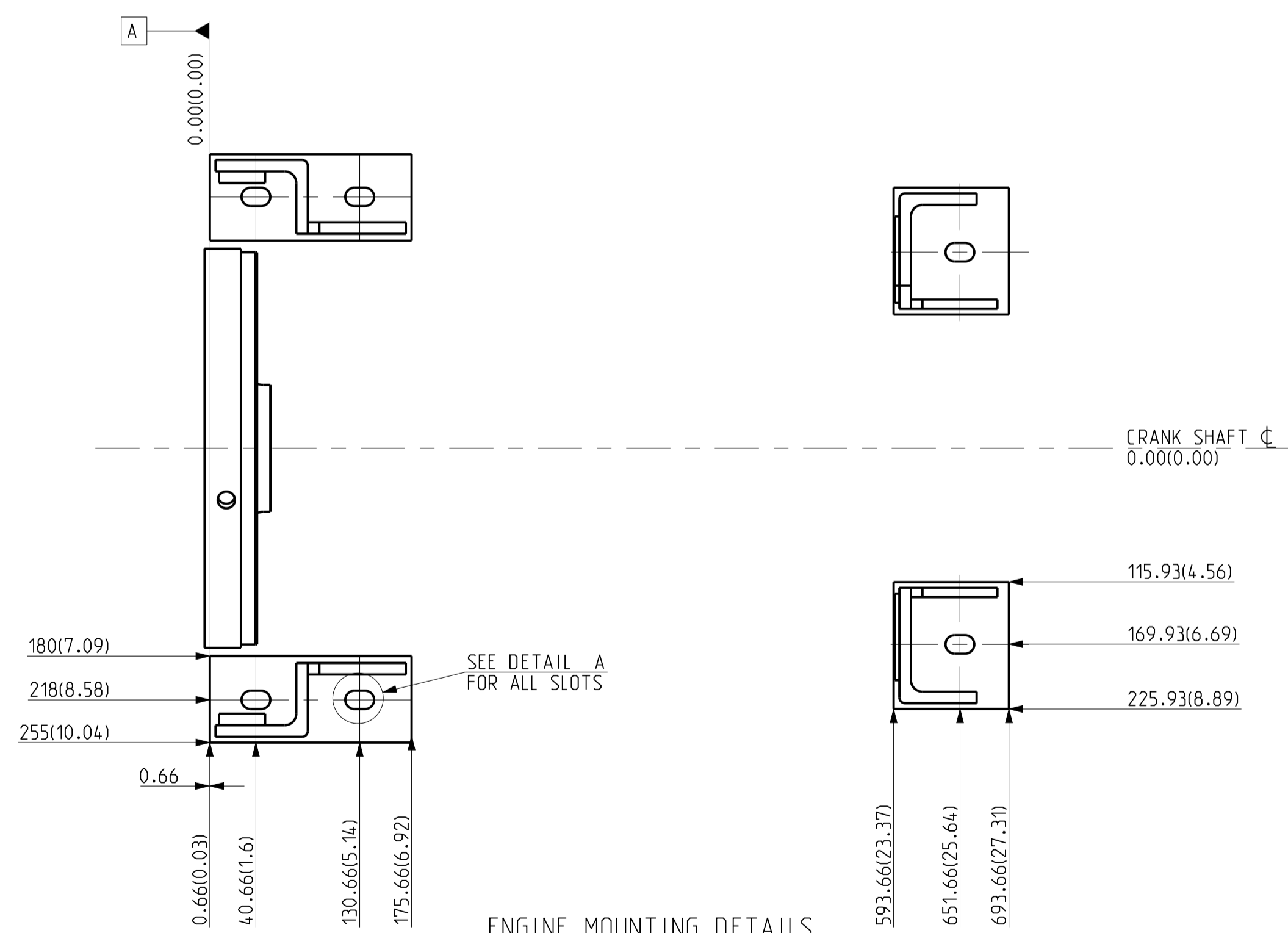
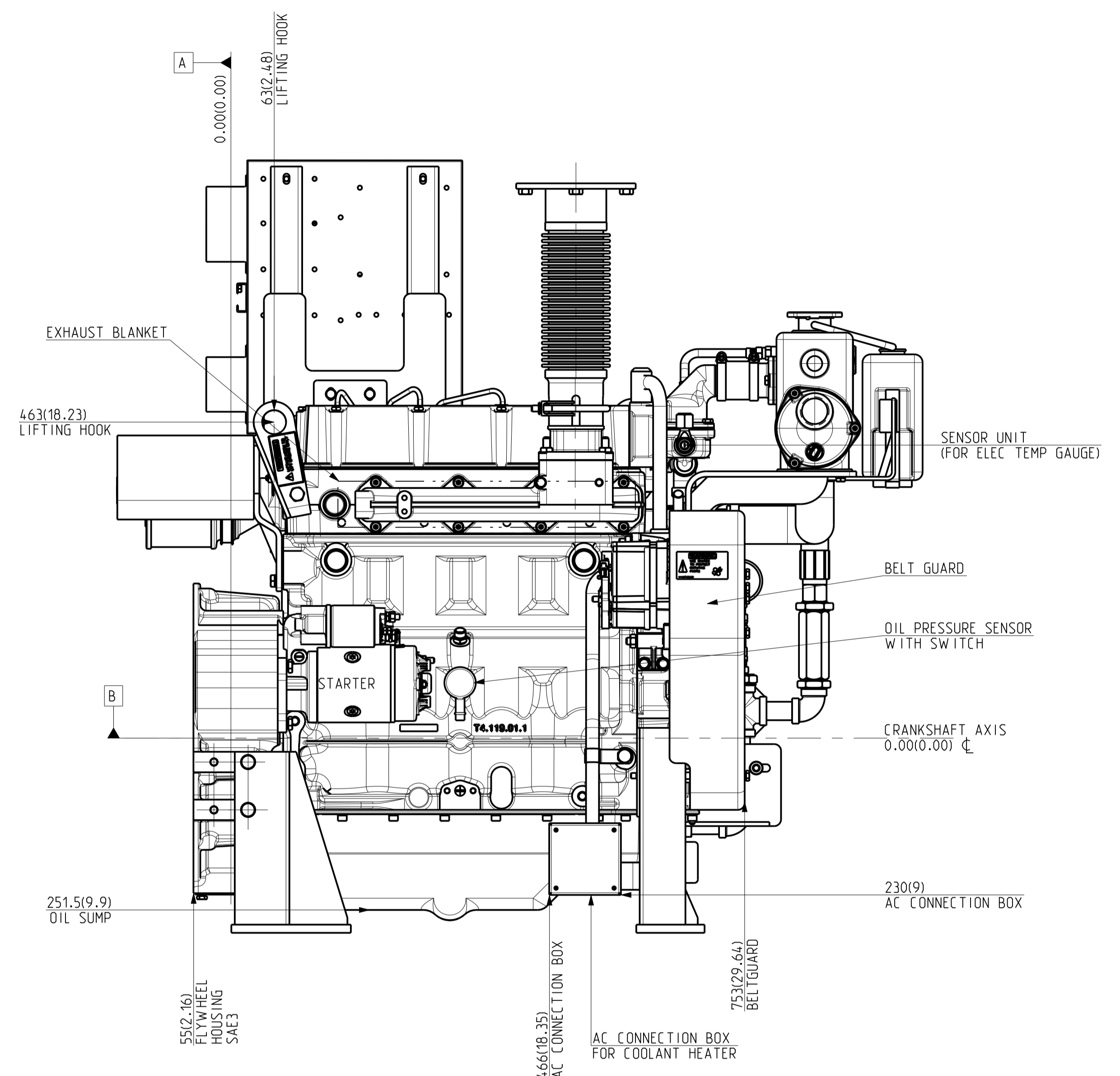
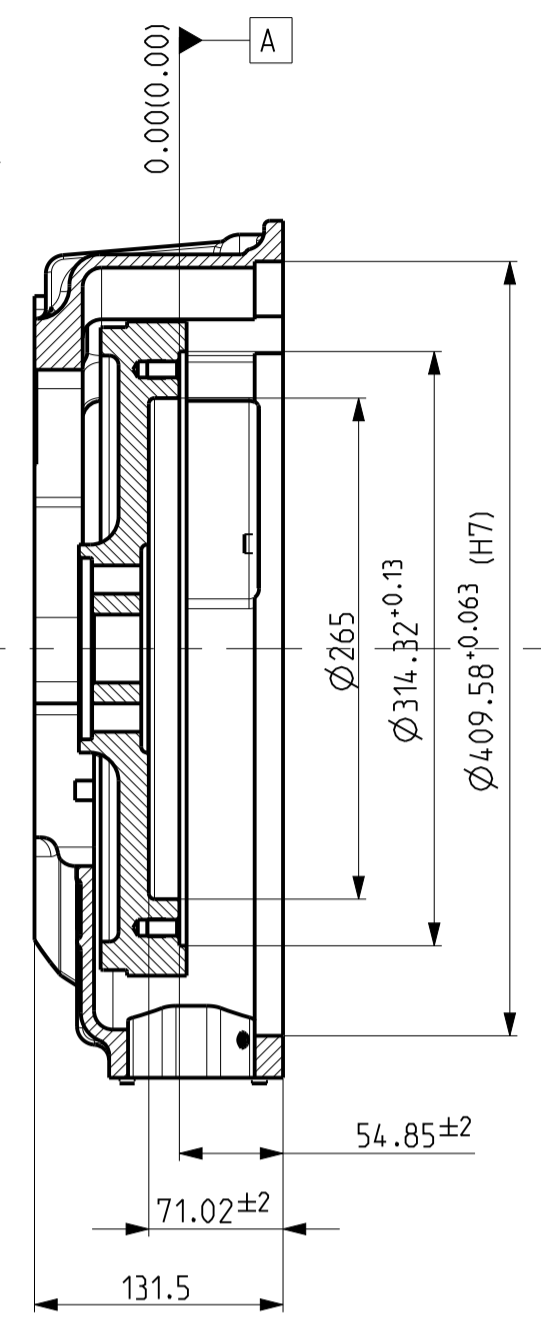
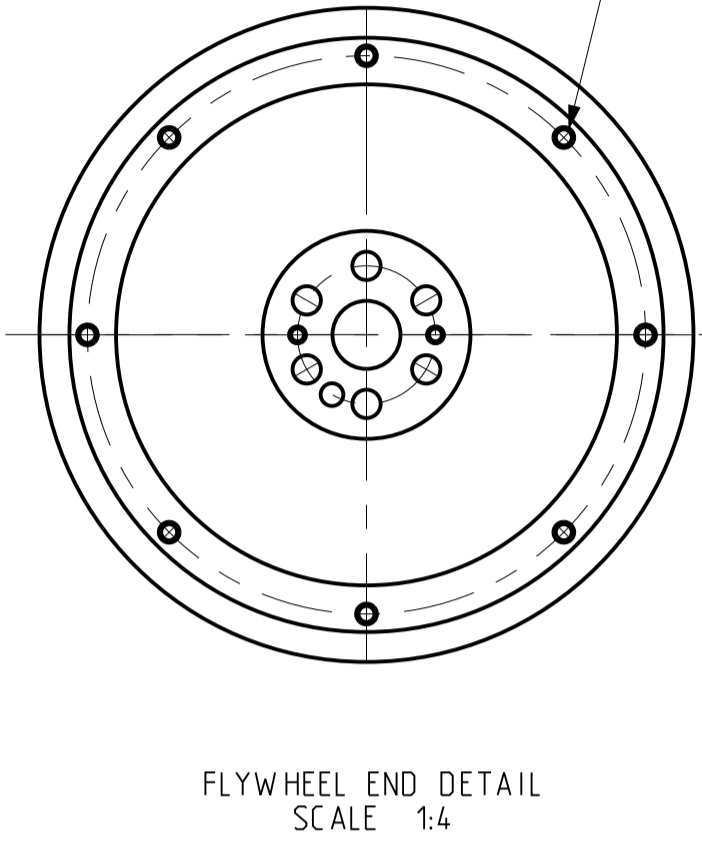
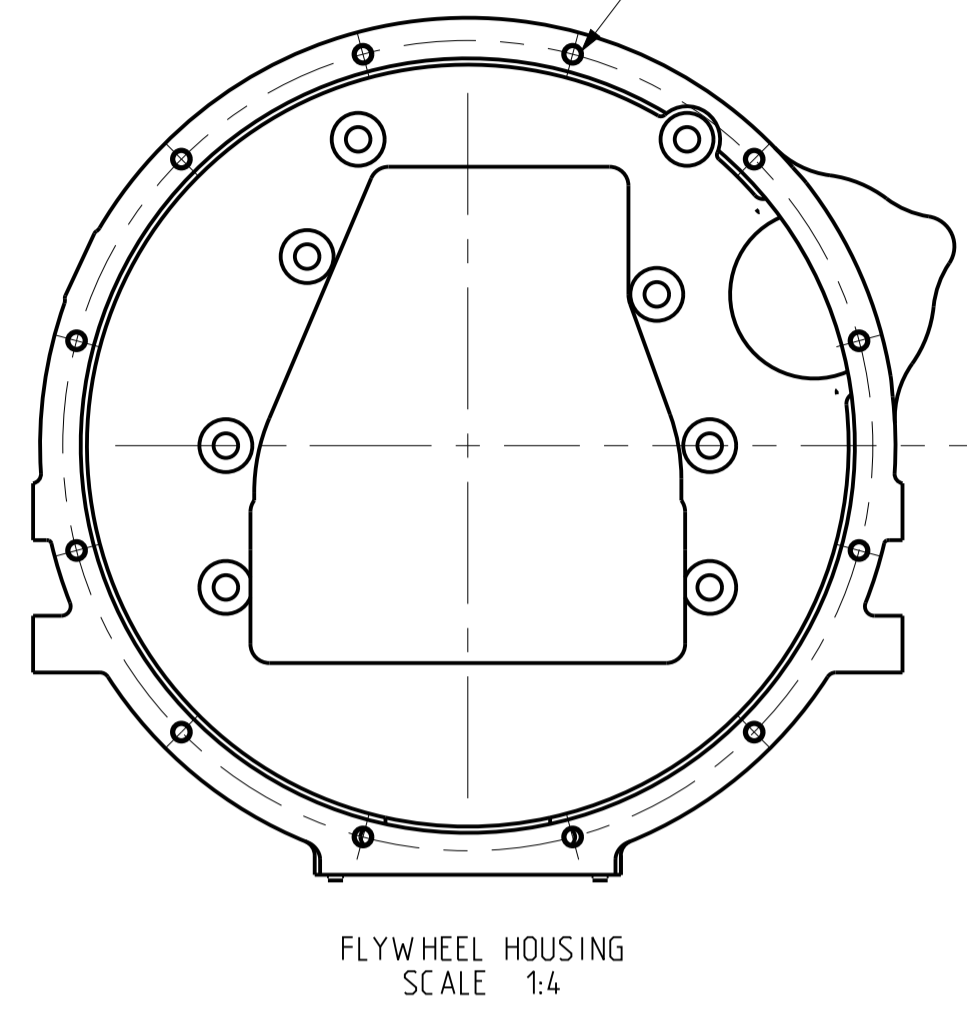
IF IN DOUBT ASK
 PRINTS OF PREVIOUS REVISION NO. SHOULD BE SCRAPPED

THIS DRAWING IS PROPERTY OF KIRLOSKAR OIL ENGINES LTD. AND MUST BE RETURNED ON REQUEST. IT IS SUBMITTED AS CONFIDENTIAL INFORMATION WITH OUR ENQUIRY, TENDER, ORDER OR CONTRACT NO. IT IS NOT TO BE ISSUED FOR ANY OTHER PURPOSE OR ORDER NOR MAY BE COPIED OR LENT WITHOUT OUR AUTHORITY IN WRITING.
 FORMAT No.RBE/FORM/056/01 (REFER DDP No. RBE 4.4.03)

UNLESS OTHERWISE SPECIFIED		CAD DRG. FILE:- PLM		CASTING/FORGING DRG. NO.					
● ALL DIMENSIONS ARE IN MM.		MATERIAL :-		HEAT TREATMENT :-					
● SURFACE ROUGHNESS AS PER CO. STD. NO. 10501.		DRN SSG(MODELCAM)		WEIGHT (kg) :-					
● UNMENTIONED TOLERANCES AS PER CO. STD. NO. 19001MM.		CHD.		TYPE KFP4R-UF05					
● REMOVE ALL SHARP BURRS AND SHARP EDGES.		APPD. B.P. Dashmukh		SCALE 1:6					
● DRAWING NOT TO BE SCALED.		DATE 13/04/2017		SHT. NO 1 OF 2					
UNMENTIONED		DATE 13/04/2017		DRAWING FOR KFP4R-UF05 SERIES ENGINES.					
RADII		KIRLOSKAR OIL ENGINES LTD..		DRAWING NO.					
CHAMFER		PUNE 411 003 (INDIA)		REV. NO.					
UNDERCUT		T4.2427.00.0.00		00					
No.	REVISION	ZONE	MODIFIED BY	REF. No. DATE	No.	REVISION	ZONE	MODIFIED BY	REF. No. DATE
00	NEW RELEASE				14.0409 28/04/2017				

12 HOLES Ø8.4 DRILL 25 DEEP & TAP M10X1.5, 22 DEEP EQUISPACED ON 428.6 ±0.125 PCD AS SHOWN

8 HOLES Ø8.4 DRILL, 22 DEEP & TAP M10X1.5, 17 DEEP EQUISPACED ON 295.3 PCD. AS SHOWN ***



NOTES:
ALL DIMENSIONS SHOWN ARE IN MM AND IN BRACKET ARE IN INCHES.

LIFECYCLE STATE:- Released

IF IN DOUBT ASK PRINTS OF PREVIOUS REVISION NO. SHOULD BE SCRAPPED

THIS DRAWING IS PROPERTY OF KIRLOSKAR OIL ENGINES LTD. AND MUST BE RETURNED ON REQUEST. IT IS SUBMITTED AS CONFIDENTIAL INFORMATION WITH OUR ENQUIRY, TENDER, ORDER OR CONTRACT NO. IT IS NOT TO BE ISSUED FOR ANY OTHER PURPOSE OR ORDER NOR MAY BE COPIED OR LENT WITHOUT OUR AUTHORITY IN WRITING.

FORMAT No.RBE/FORM/056/01 (REFER DOP No. RBE 4.4.03)

UNLESS OTHERWISE SPECIFIED				CAD DRG. FILE:- PLM		CASTING/FORGING DRG. NO.	
● ALL DIMENSIONS ARE IN mm.				MATERIAL :-		HEAT TREATMENT :-	
● SURFACE ROUGHNESS AS PER CO. STD.NO.10501.				DRN SSG(MODELCAM)		WEIGHT (kg) :-	
● UNMENTIONED TOLERANCES AS PER CO.STD.NO.19001MM.				CHD.		---	
● REMOVE ALL SHARP BURRS AND SHARP EDGES.				APPD. B.P. Deshmukh		TITLE	
● DRAWING NOT TO BE SCALED.				DATE 13/04/2017		ENGINE INSTALLATION	
UNMENTIONED				DATE 13/04/2017		DRAWING FOR KFP4R-UF05 SERIES ENGINES.	
RAD11				KIRLOSKAR OIL ENGINES LTD..		DRAWING NO.	
CHAMFER				PUNE 411 003 (INDIA)		REV. NO.	
UNDERCUT				T4.2427.00.0.00		00	
No.	REVISION	ZONE	MODIFIED BY	REF. No. DATE	No.	REVISION	ZONE
00	NEW RELEASE			14.0409 28/04/2017			