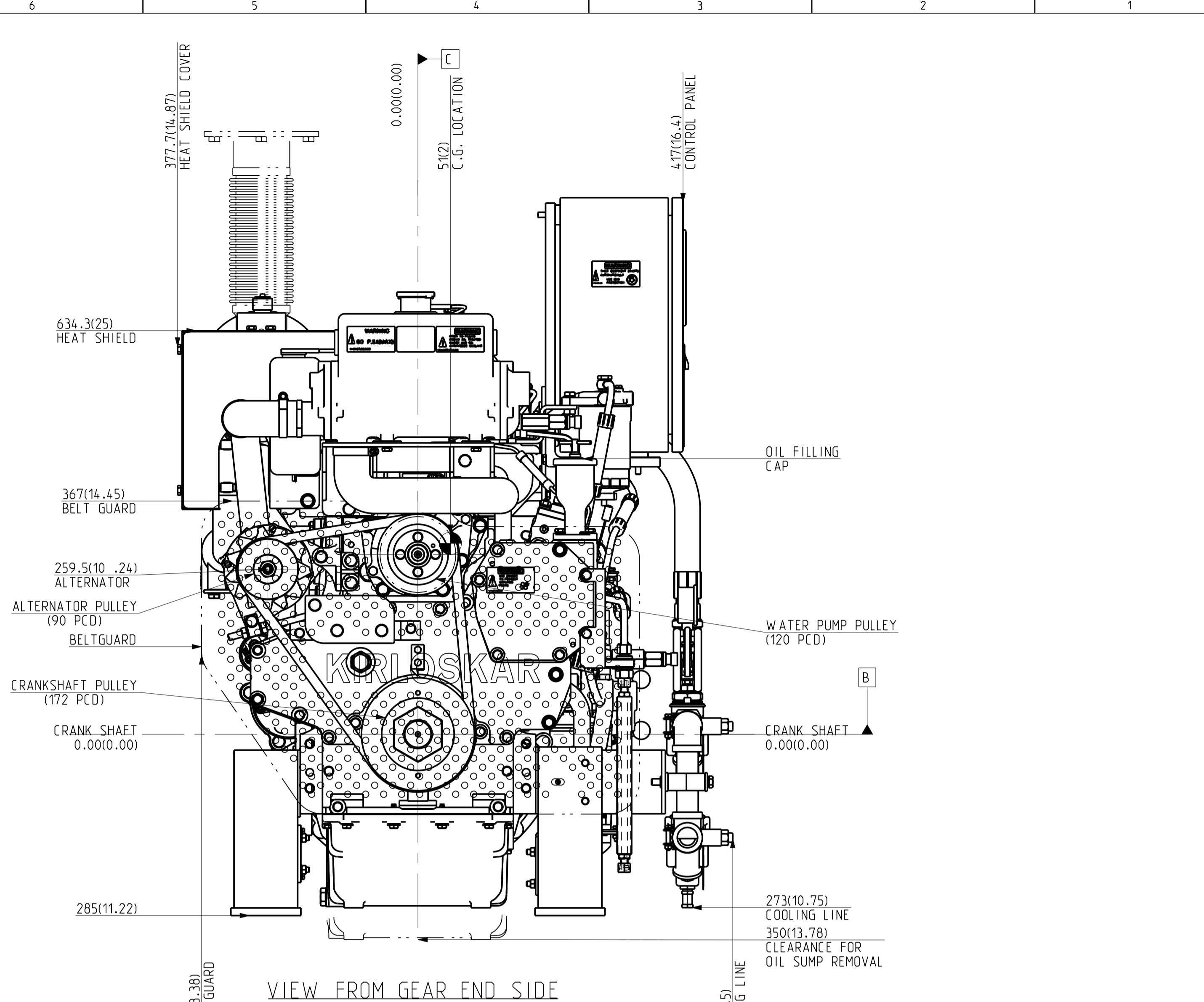
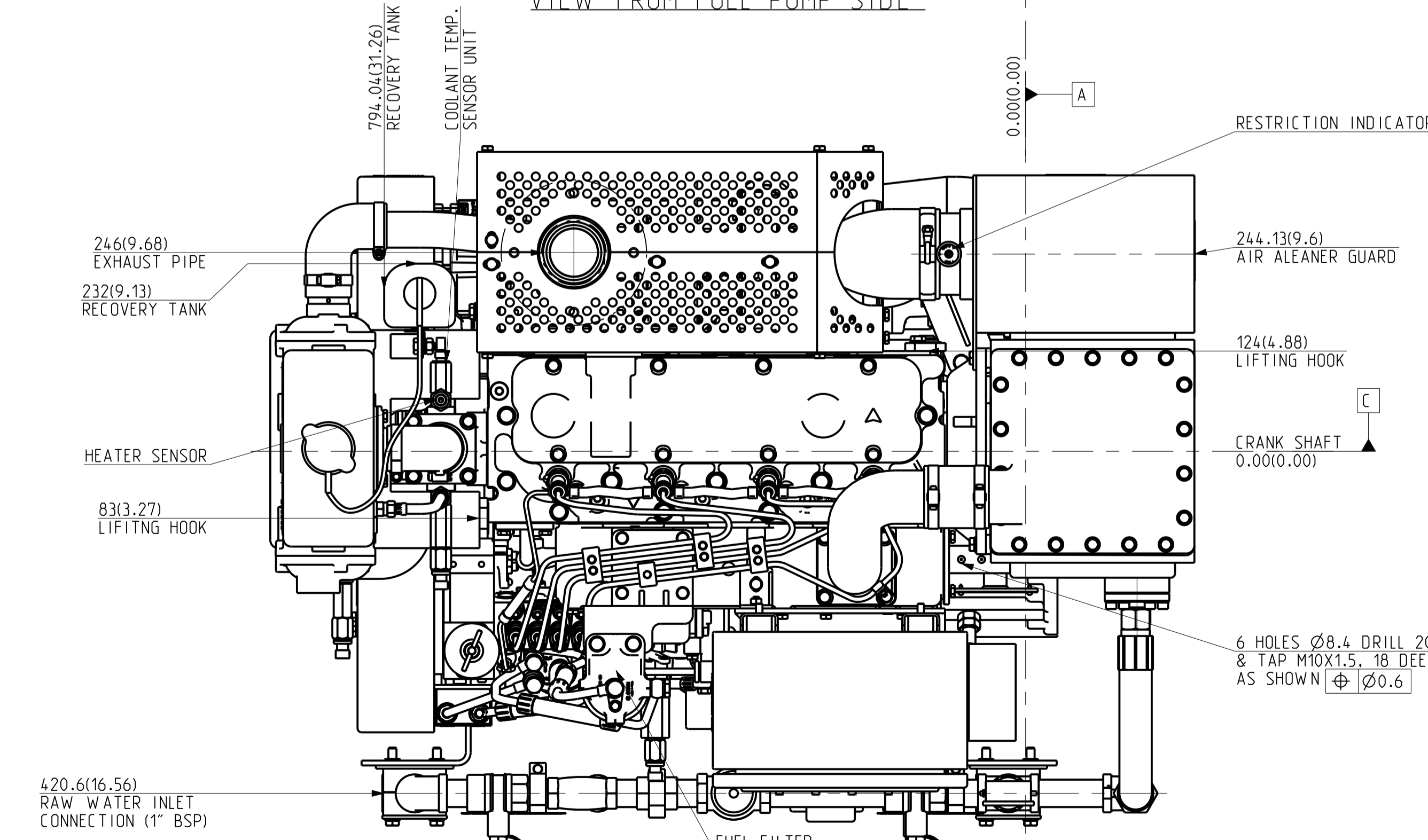


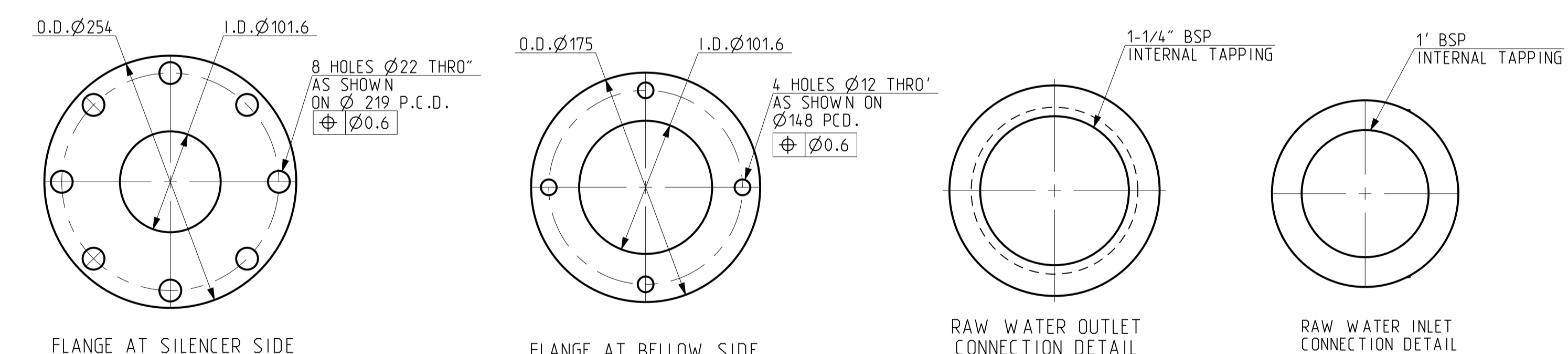
VIEW FROM FUEL PUMP SIDE



VIEW FROM GEAR END SIDE



VIEW FROM TOP SIDE



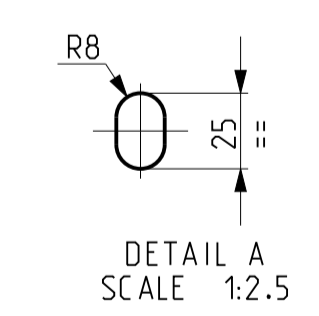
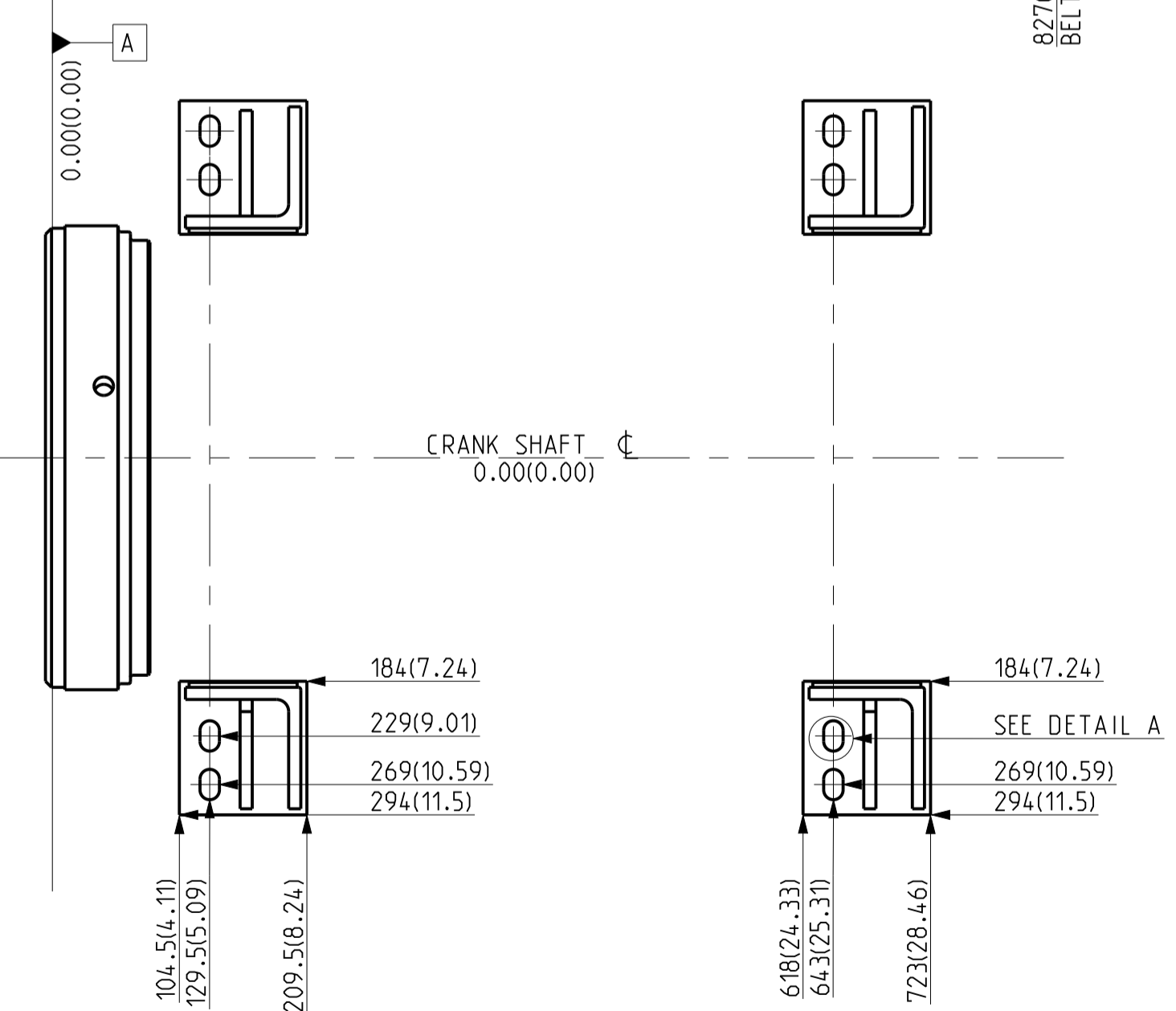
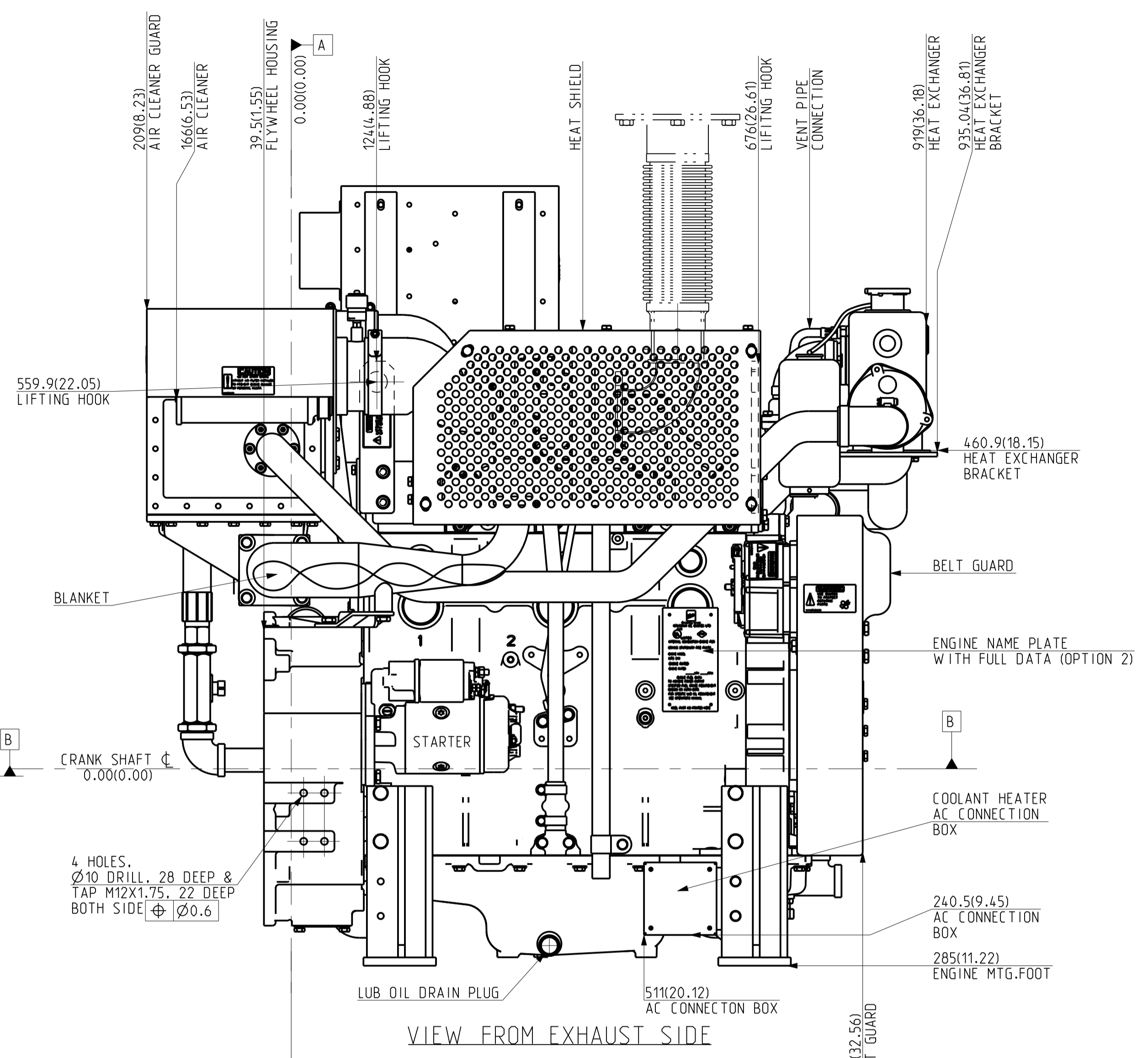
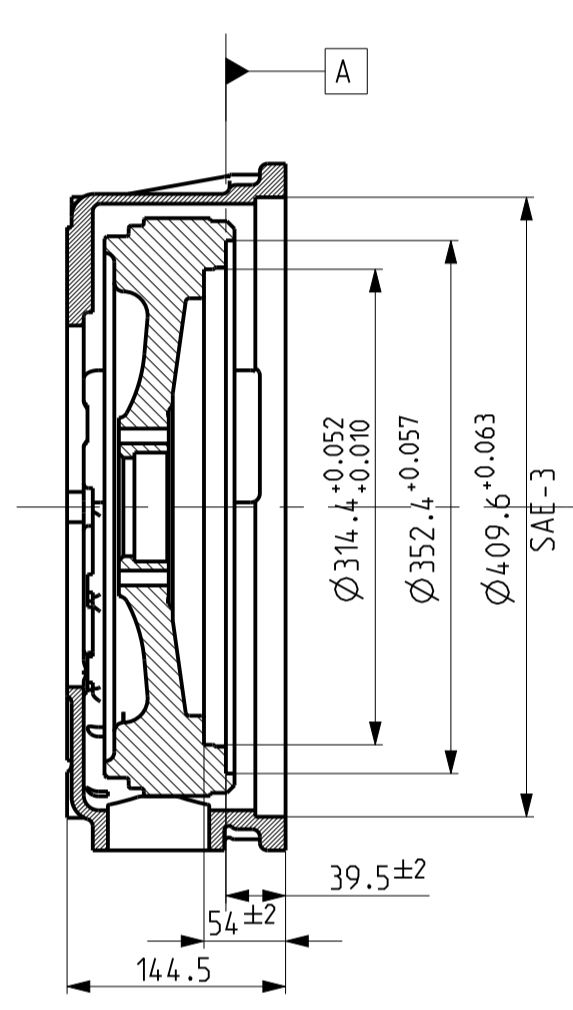
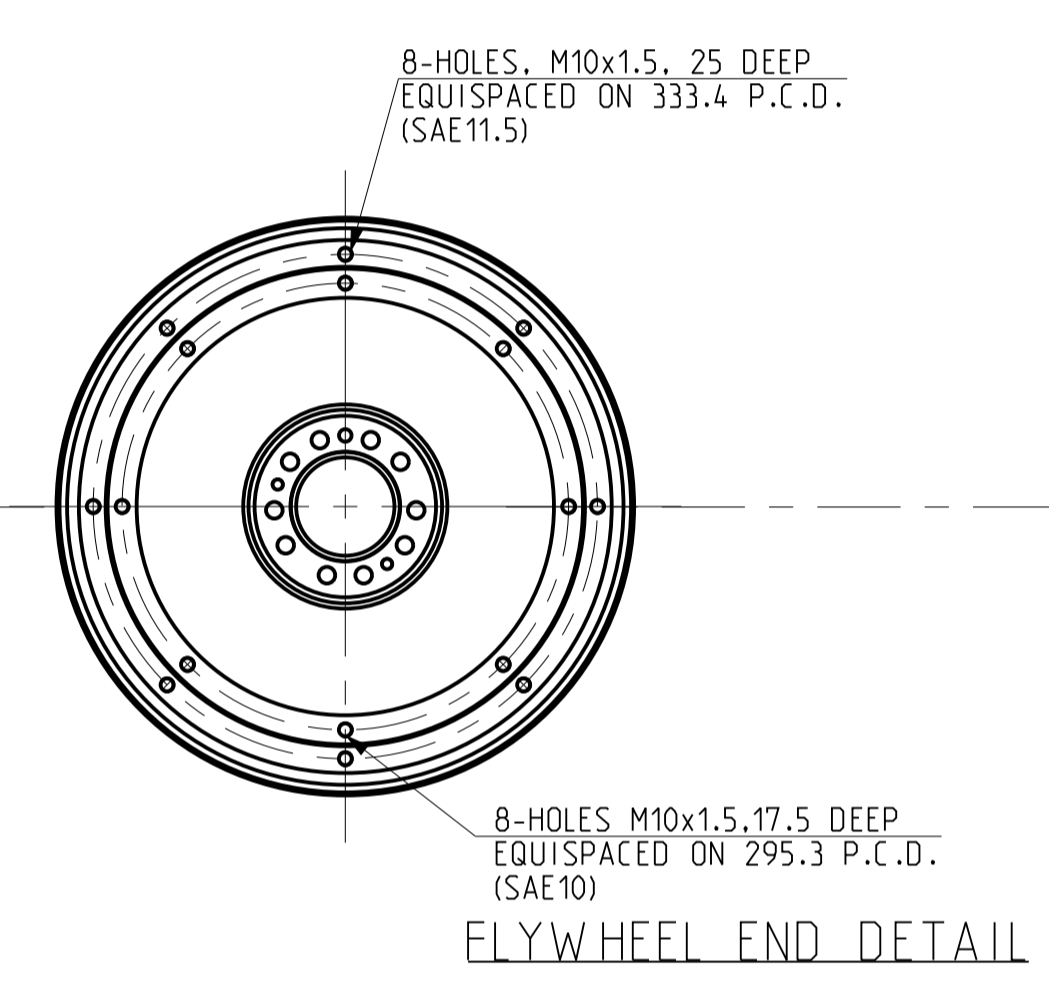
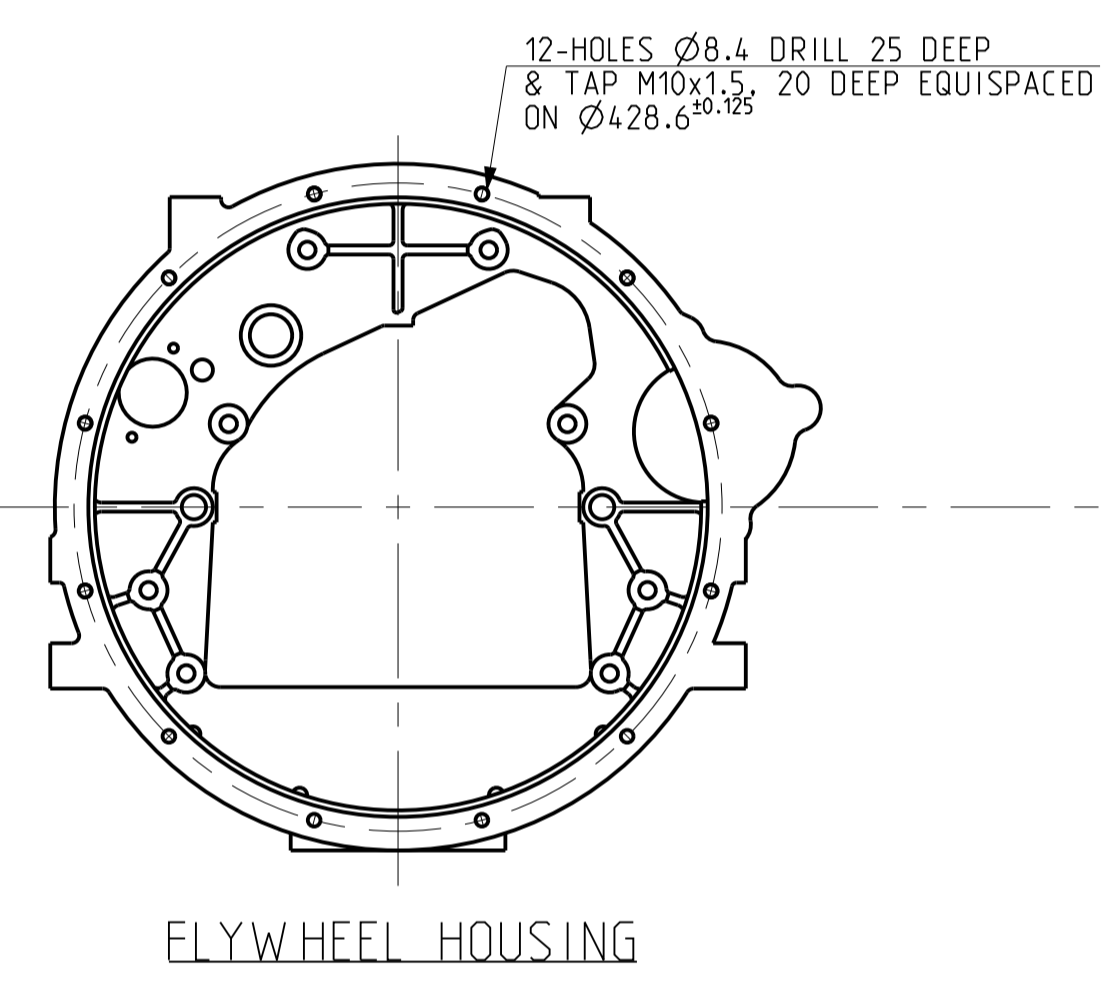
- DATUMS
- [A] MOUNTING FACE OF FLYWHEEL.
  - [B] ENGINE CRANKSHAFT HORIZONTAL CENTRE LINE.
  - [C] ENGINE CRANKSHAFT VERTICAL CENTRE LINE.
  - ☉ CENTER OF GRAVITY OF ENGINE

NOTE:- ALL DIMENSIONS SHOWN ARE IN MM AND IN BRACKET ARE IN INCHES.

IF IN DOUBT ASK  
PRINTS OF PREVIOUS REVISION NO. SHOULD BE SCRAPPED

THIS DRAWING IS PROPERTY OF KIRLOSKAR OIL ENGINES LTD. AND MUST BE RETURNED ON REQUEST. IT IS SUBMITTED AS CONFIDENTIAL INFORMATION WITH OUR ENQUIRY, TENDER, ORDER OR CONTRACT NO. IT IS NOT TO BE ISSUED FOR ANY OTHER PURPOSE OR ORDER NOR MAY BE COPIED OR LENT WITHOUT OUR AUTHORITY IN WRITING.  
FORMAT No.RBE/FORM/056/01 (REFER DDP No. RBE 4.4.03)

|   |  |                     |  |                                |  |                             |  |
|---|--|---------------------|--|--------------------------------|--|-----------------------------|--|
| UNLESS OTHERWISE SPECIFIED                            |  | CAD DRG. FILE:-     |  | PLM                            |  | CASTING/FORGING DRG. NO.    |  |
| ● ALL DIMENSIONS ARE IN mm.                           |  | MATERIAL :-         |  | HEAT TREATMENT :-              |  | WEIGHT (kg) :-              |  |
| ● SURFACE ROUGHNESS AS PER CO. STD. NO. 10501.        |  | DRN                 |  | TITLE                          |  | TYPE                        |  |
| ● UNMENTIONED TOLERANCES AS PER CO. STD. NO. 11001MM. |  | CHD.                |  | ENGINE INSTALLATION DRAWING    |  | KFP4R-UF15                  |  |
| ● REMOVE ALL SHARP BURRS AND SHARP EDGES.             |  | APPD.               |  | FOR KFP4R-UF15 SERIES ENGINES. |  | SCALE                       |  |
| ● DRAWING NOT TO BE SCALED.                           |  | DATE                |  | 03/02/2017                     |  | 1:5                         |  |
|   |  | UNMENTIONED         |  |                                |  | SHT. NO                     |  |
|   |  | RADI1               |  |                                |  | 1 OF 2                      |  |
|   |  | CHAMFER             |  |                                |  | DRAWING NO.                 |  |
|   |  | UNDERCUT            |  |                                |  | REV. NO.                    |  |
|   |  | 00 PR CHANGED TO 00 |  | 19242 13/04/2018               |  | KIRLOSKAR OIL ENGINES LTD., |  |
|   |  |                     |  |                                |  | PUNE 411 003 (INDIA)        |  |
|   |  |                     |  |                                |  | 4H.2592.00.0.00             |  |
|   |  |                     |  |                                |  | 00                          |  |



IF IN DOUBT ASK  
PRINTS OF PREVIOUS REVISION NO. SHOULD BE SCRAPPED

THIS DRAWING IS PROPERTY OF KIRLOSKAR OIL ENGINES LTD. AND MUST BE RETURNED ON REQUEST. IT IS SUBMITTED AS CONFIDENTIAL INFORMATION WITH OUR ENQUIRY, TENDER, ORDER OR CONTRACT NO. IT IS NOT TO BE ISSUED FOR ANY OTHER PURPOSE OR ORDER NOR MAY BE COPIED OR LENT WITHOUT OUR AUTHORITY IN WRITING.  
FORMAT No.RBE/FORM/056/01 (REFER DOP No. RBE 4.4/03)

|   |  |  |  |  |  |                             |  |
|---|--|--|--|--|--|-----------------------------|--|
| UNLESS OTHERWISE SPECIFIED                            |  |  |  | CAD DRG. FILE:- PLM                              |  | CASTING/FORGING DRG. NO.    |  |
| ● ALL DIMENSIONS ARE IN mm.                           |  |  |  | MATERIAL :-                                      |  | WEIGHT (kg) :-              |  |
| ● SURFACE ROUGHNESS AS PER CO. STD. NO. 10501.        |  |  |  | HEAT TREATMENT :-                                |  | ---                         |  |
| ● UNMENTIONED TOLERANCES AS PER CO. STD. NO. 11001/M. |  |  |  | DRN MVM(MODELCAM)                                |  | TYPE KFP4R-UF15             |  |
| ● REMOVE ALL SHARP BURRS AND SHARP EDGES.             |  |  |  | CHD. <i>E. Vishwan</i>                           |  | SCALE 1:5                   |  |
| ● DRAWING NOT TO BE SCALED.                           |  |  |  | APPD. <i>B. P. Deshpande</i>                     |  | SHT. NO 2 OF 2              |  |
| UNMENTIONED   |  |  |  | DATE 03/02/2017                                  |  | DRAWING NO. 4H.2592.00.0.00 |  |
| 00 PR CHANGED TO 00                                   |  |  |  | 1924 31/04/2018                                  |  | REV. NO. 00                 |  |
| No. REVISION ZONE MODIFIED BY REF. No. DATE           |  |  |  | KIRLOSKAR OIL ENGINES LTD., PUNE 411 003 (INDIA) |  |                             |  |