

**ATTENTION**  
\*REFER "TECHNICAL BULLETIN" PART NO. 4H.1901.01.0.00, PROVIDED ALONG WITH THE ENGINE FOR AVM INSTALLATION GUIDELINES FOR BASE ALONG WITH ENGINE.

**CAUTION**  
\*ALL PLUMBING MUST BE SUPPORTED AND/OR ISOLATED SO THAT NO WEIGHT OR STRESS IS APPLIED TO ANY ENGINE COMPONENT.  
\*BASE MUST BE FULLY GROUTED AND SECURE WITH SUITABLE ANCHOR BOLTS.

NOTE:  
ALL DIMENSIONS SHOWN ARE IN MM AND IN BRACKET ARE IN INCHES.

IF IN DOUBT ASK  
PRINTS OF PREVIOUS REVISION NO. SHOULD BE SCRAPPED

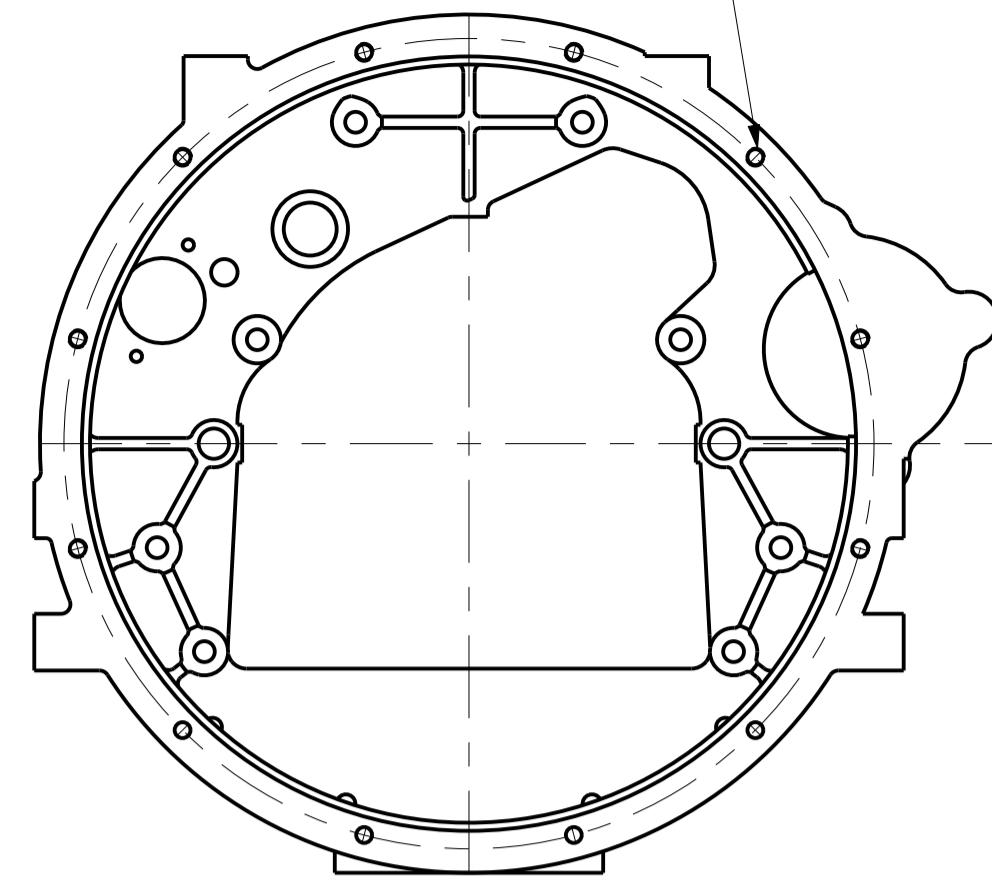
DATUMS:  
A MOUNTING FACE OF FLYWHEEL  
B ENGINE CRANKSHAFT HORIZONTAL CENTRE LINE  
C ENGINE CRANKSHAFT VERTICAL CENTRE LINE  
Center of Gravity of Engine

THIS DRAWING IS PROPERTY OF KIRLOSKAR OIL ENGINES LTD. AND MUST BE RETURNED ON REQUEST. IT IS SUBMITTED AS CONFIDENTIAL INFORMATION WITH OUR ENQUIRY, TENDER, ORDER OR CONTRACT NO. IT IS NOT TO BE ISSUED FOR ANY OTHER PURPOSE OR ORDER NOR MAY BE COPIED OR LENT WITHOUT OUR AUTHORITY IN WRITING.  
FORMAT No.RBE/FORM/056/01 (REFER DOP No. RBE 4.4/03)

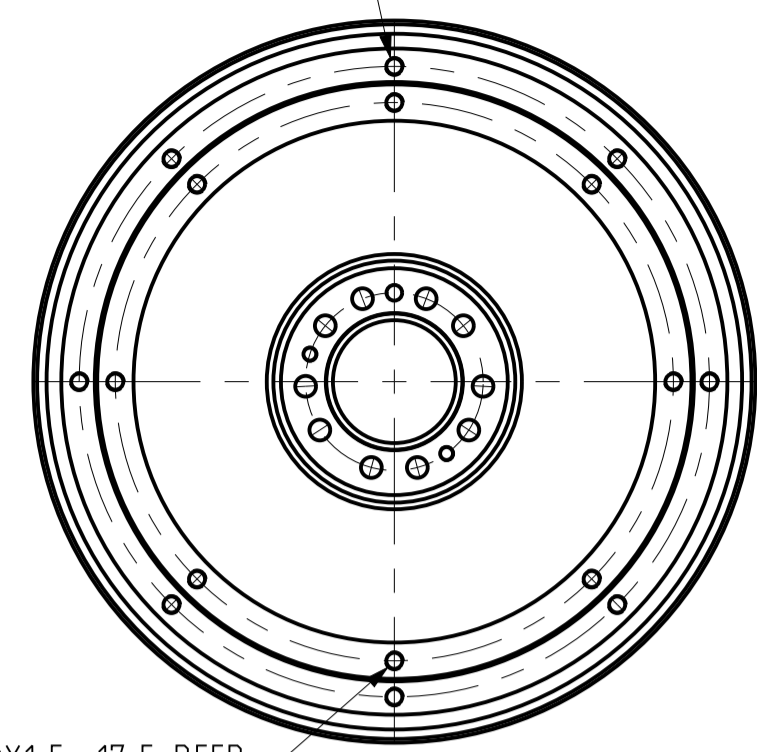
UNLESS OTHERWISE SPECIFIED				CAD DRG. FILE:- PLM				CASTING/FORGING DRG. NO.					
● ALL DIMENSIONS ARE IN mm.				MATERIAL :-				HEAT TREATMENT :-					
● SURFACE ROUGHNESS AS PER CO. STD. NO. 10501.				DRN SSG(MODELCAM)				TITLE					
● UNMENTIONED TOLERANCES AS PER CO. STD. NO. 11001MM.				CHD. S. Kulkarni				ENGINE INSTALLATION					
● REMOVE ALL SHARP BURRS AND SHARP EDGES.				APPD. B. P. Deshpande				SCALE 1:5					
● DRAWING NOT TO BE SCALED.				DATE 05/06/2017				SHT. NO 1 OF 2					
UNMENTIONED				DATE 05/06/2017				DRAWING FOR KFP4R-UFO8 SERIES ENGINES.					
RADI1				KIRLOSKAR OIL ENGINES LTD..				DRAWING NO. 4H.2215.00.0.00					
CHAMFER				PUNE 411 003 (INDIA)				REV. NO. 01					
UNDERCUT													
No.	REVISION	ZONE	MODIFIED BY	REF. No.	DATE	No.	REVISION	ZONE	MODIFIED BY	REF. No.	DATE		
01	ENGINE FOUNDATION LAYOUT MODIFIED		SSG	2016/05/06	2017/05/06	00	NEW RELEASE						

12-HOLES Ø8.4 DRILL 25 DEEP & TAP M10X 1.5, 20 DEEP EQUISPACED ON Ø428.6 ±0.125

8-HOLES M10X1.5, 25 DEEP EQUISPACED ON 333.4 P.C.D. (SAE 11.5)

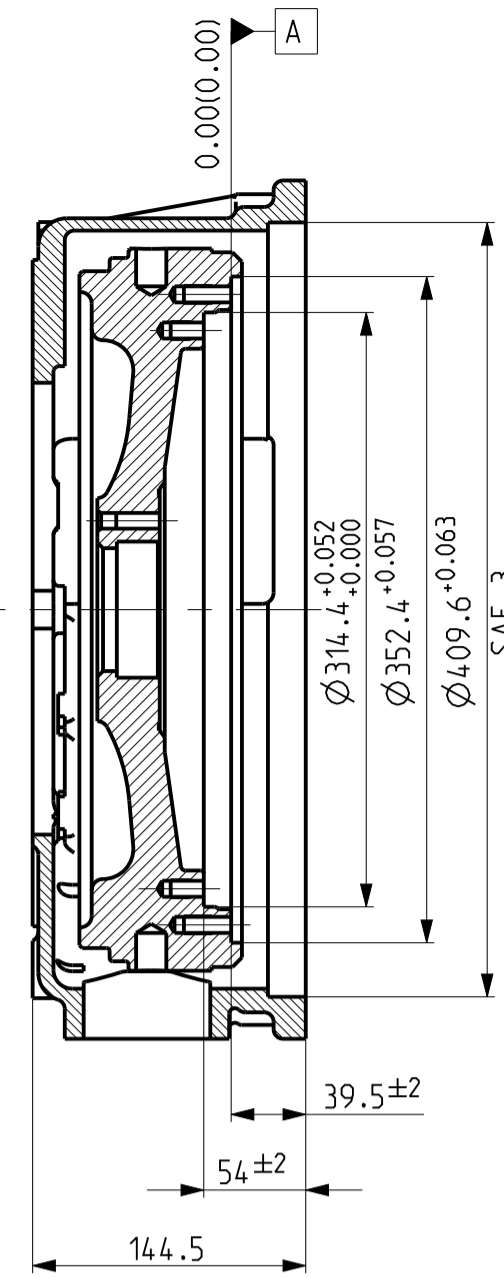


FLYWHEEL HOUSING

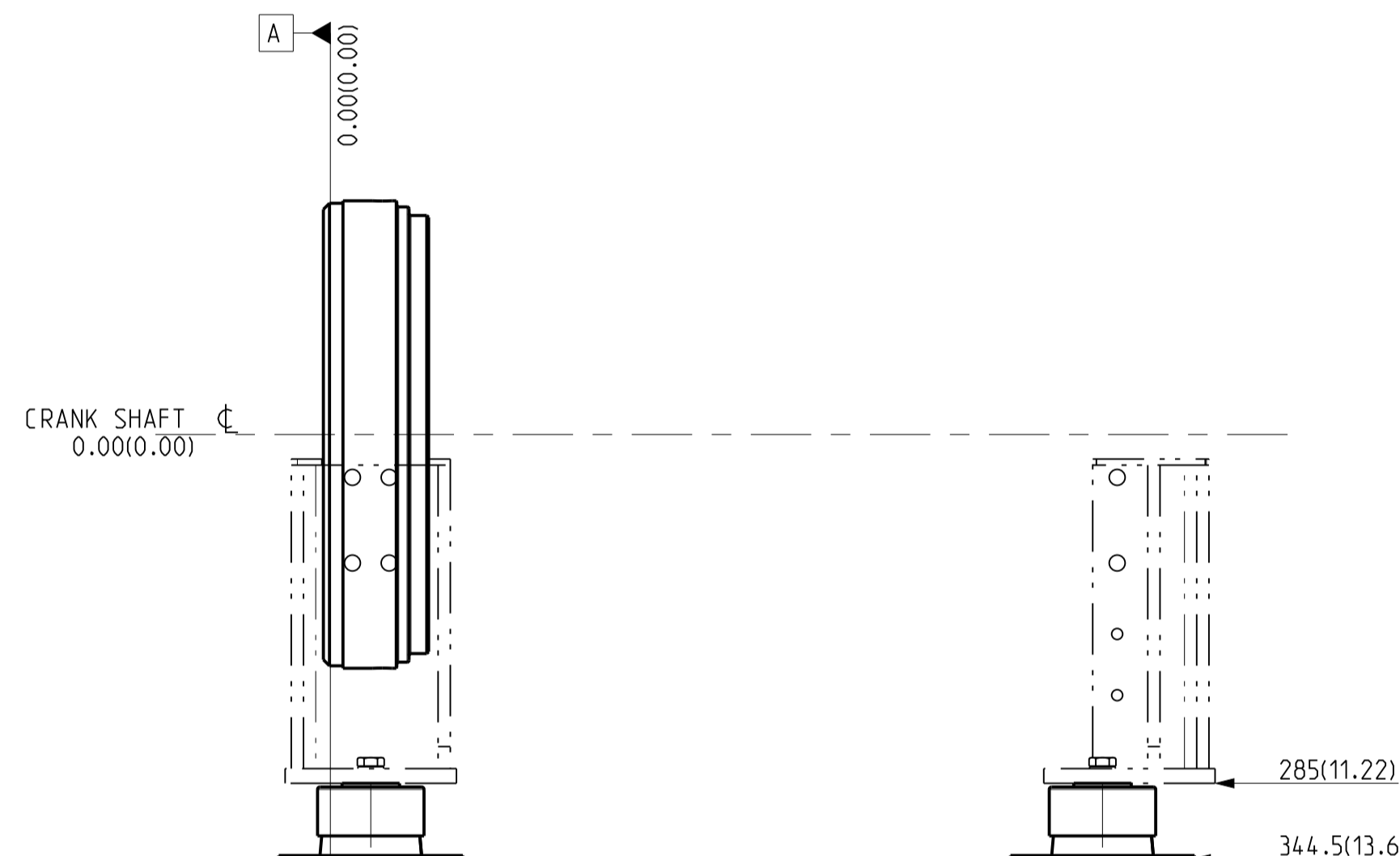


FLYWHEEL END DETAIL

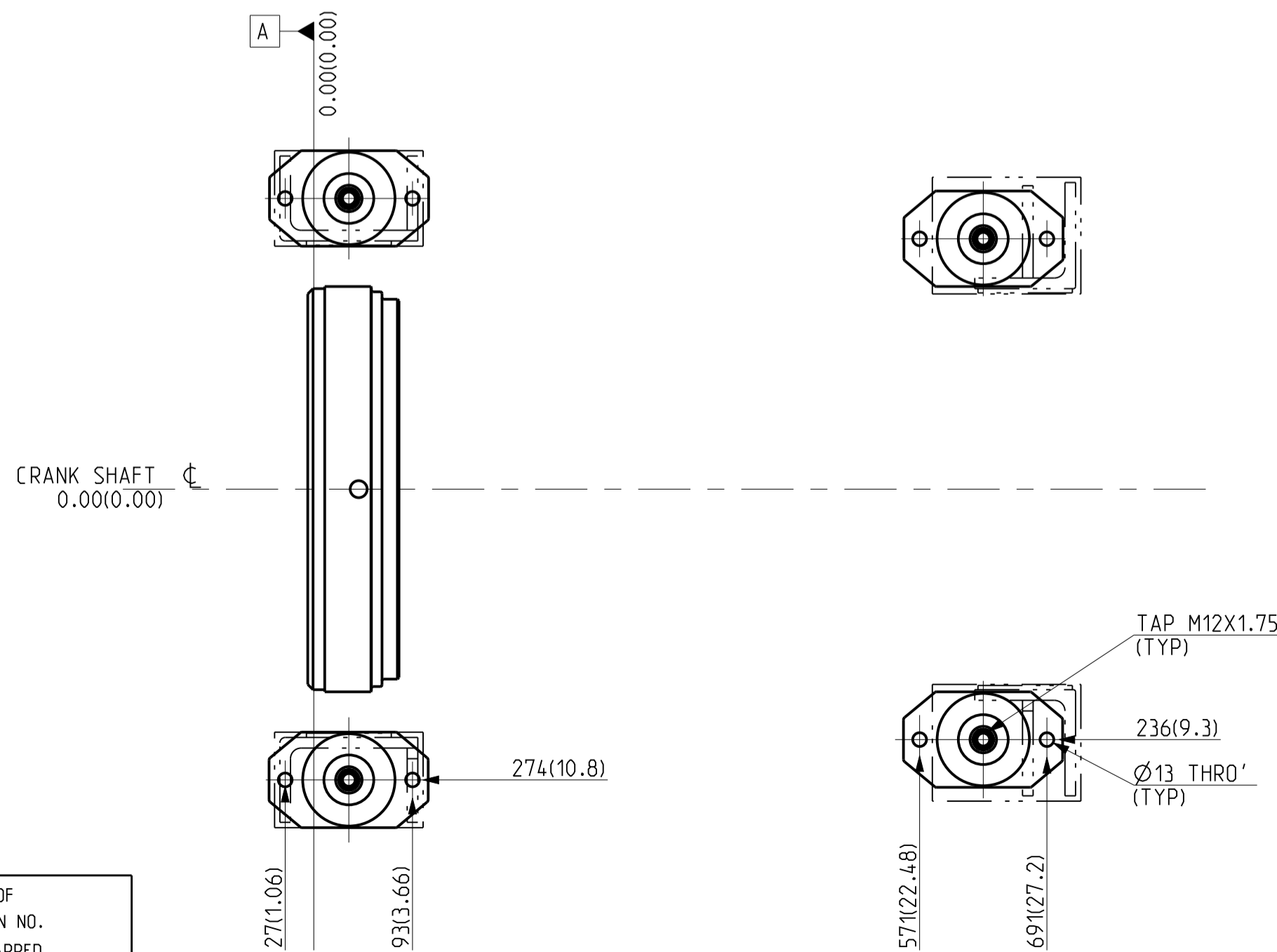
8-HOLES M10X1.5, 17.5 DEEP EQUISPACED ON 295.3 P.C.D. (SAE10)



SECTION A-A



FOUNDATION FRONT VIEW

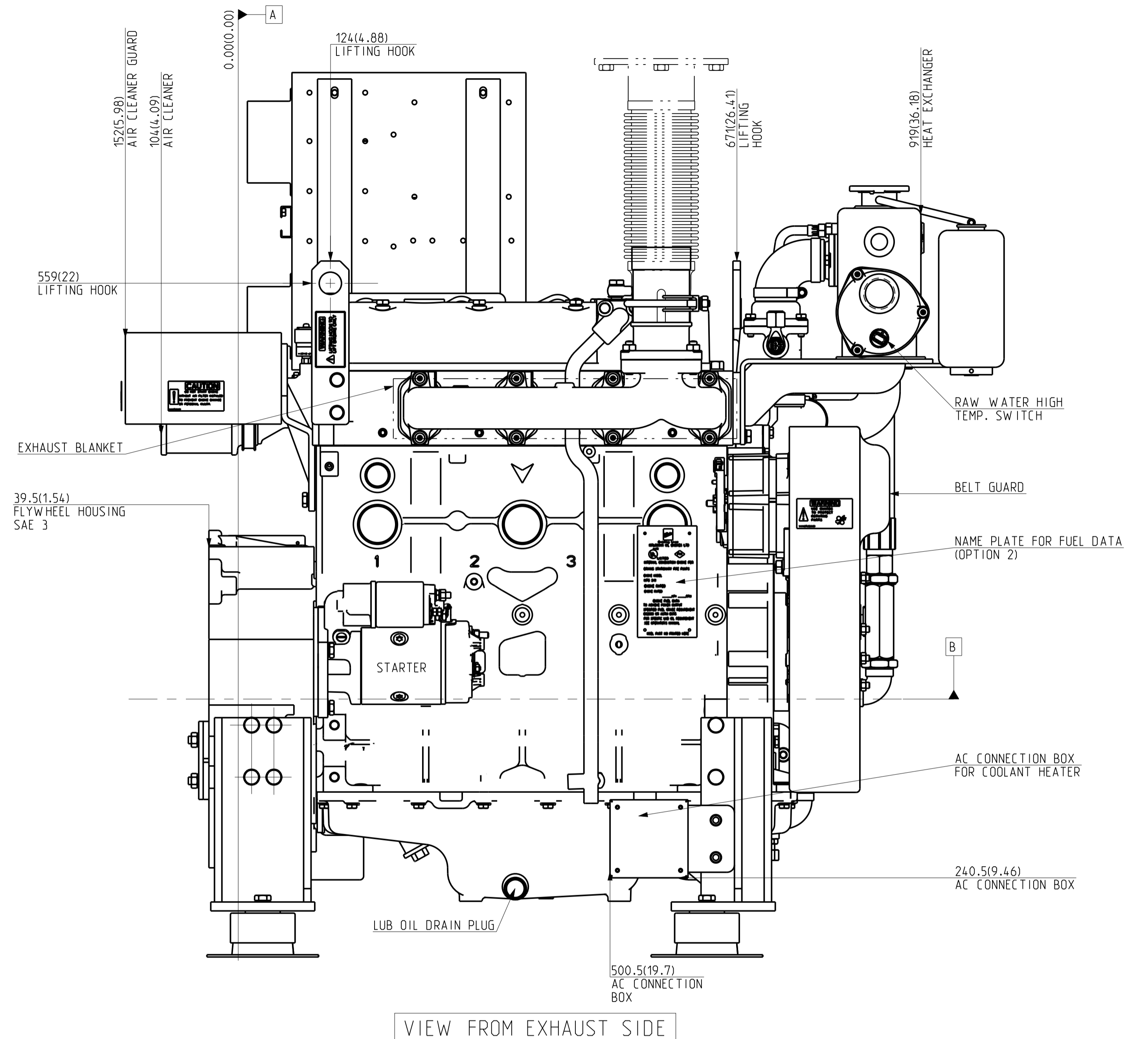


FOUNDATION PLAN VIEW

NOTE:- ALL DIMENSIONS SHOWN ARE IN MM AND IN BRACKET ARE IN INCHES.

IF IN DOUBT ASK PRINTS OF PREVIOUS REVISION NO. SHOULD BE SCRAPPED

THIS DRAWING IS PROPERTY OF KIRLOSKAR OIL ENGINES LTD. AND MUST BE RETURNED ON REQUEST. IT IS SUBMITTED AS CONFIDENTIAL INFORMATION WITH OUR ENQUIRY, TENDER, ORDER OR CONTRACT NO. IT IS NOT TO BE ISSUED FOR ANY OTHER PURPOSE OR ORDER NOR MAY BE COPIED OR LENT WITHOUT OUR AUTHORITY IN WRITING. FORMAT No.RBE/FORM/056/01 (REFER DOP No. RBE 4.4.03)



VIEW FROM EXHAUST SIDE

ATTENTION

\*REFER "TECHNICAL BULLETIN" PART NO. 4H.1901.01.0.00, PROVIDED ALONG WITH THE ENGINE FOR AVM INSTALLATION GUIDELINES FOR BASE ALONG WITH ENGINE.

CAUTION

\*ALL PLUMBING MUST BE SUPPORTED AND/OR ISOLATED SO THAT NO WEIGHT OR STRESS IS APPLIED TO ANY ENGINE COMPONENT.  
\*BASE MUST BE FULLY GROUTED AND SECURE WITH SUITABLE ANCHOR BOLTS.

UNLESS OTHERWISE SPECIFIED				CAD DRG. FILE:-				PLM		CASTING/FORGING DRG. NO.	
● ALL DIMENSIONS ARE IN mm.				MATERIAL :-				HEAT TREATMENT :-		WEIGHT (kg) :-	
● SURFACE ROUGHNESS AS PER CO. STD. NO. 10501.				DRN SSG(MODELCAM)				TITLE		TYPE KFP4R-UF08	
● UNMENTIONED TOLERANCES AS PER CO. STD. NO. 1901VM.				CHD. S. Kulkarni				ENGINE INSTALLATION		SCALE 1:4	
● REMOVE ALL SHARP BURRS AND SHARP EDGES.				APPD. S. Kulkarni				DATE 05/06/2017		SHT. NO 2 OF 2	
● DRAWING NOT TO BE SCALED.				UNMENTIONED				DRAWING FOR KFP4R-UF08 SERIES ENGINES.		DRAWING NO. REV. NO.	
01 ENGINE FOUNDATION LAYOUT MODIFIED				SSG 20161 21/02/2018				KIRLOSKAR OIL ENGINES LTD., PUNE 411 003 (INDIA)		4H.2215.00.0.00 01	
00 NEW RELEASE				CHAMFER							
				UNDERCUT							