

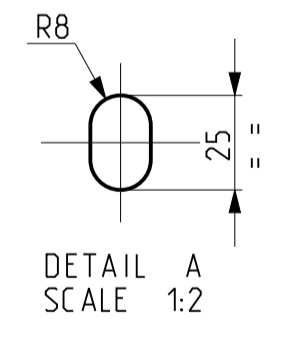
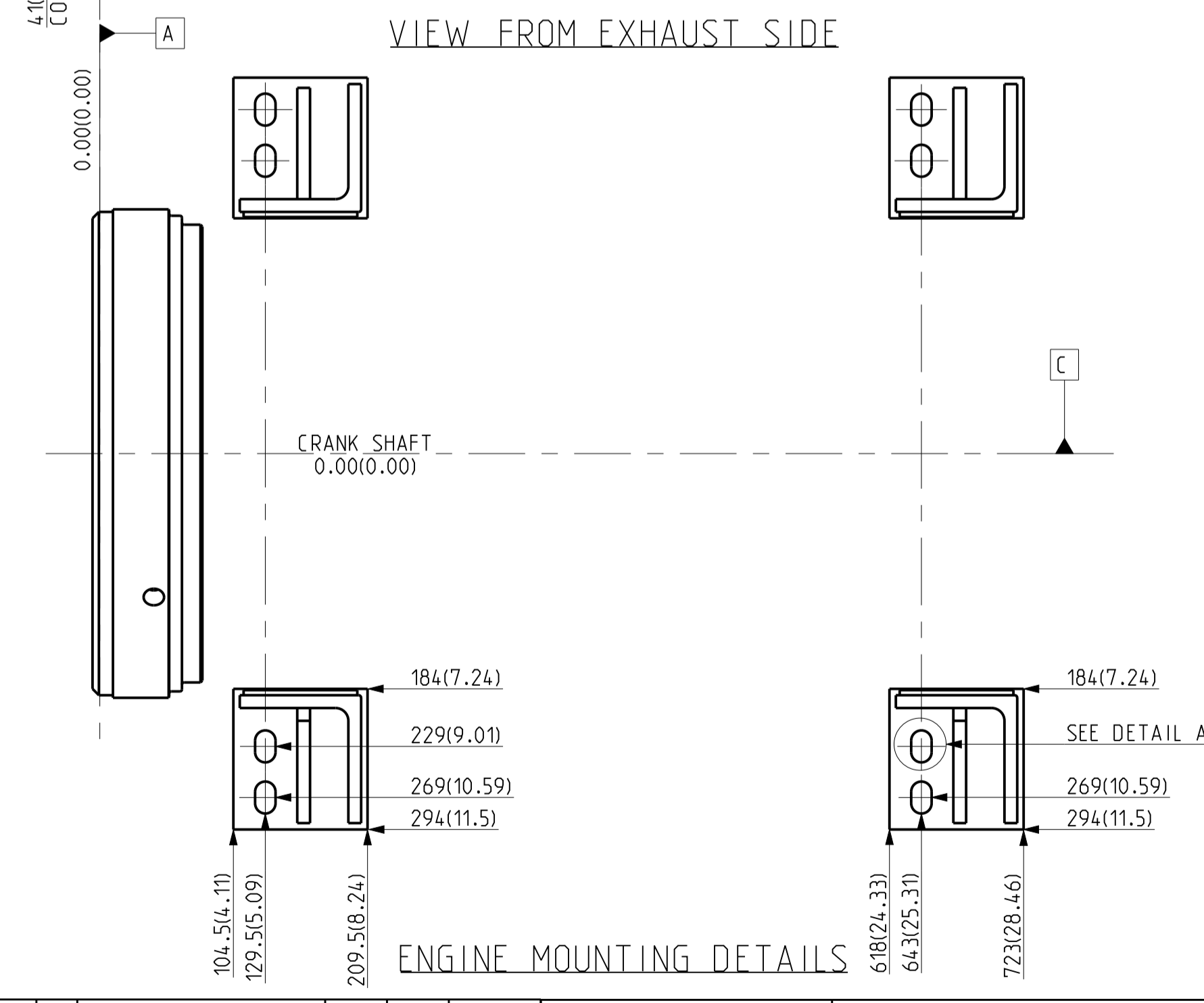
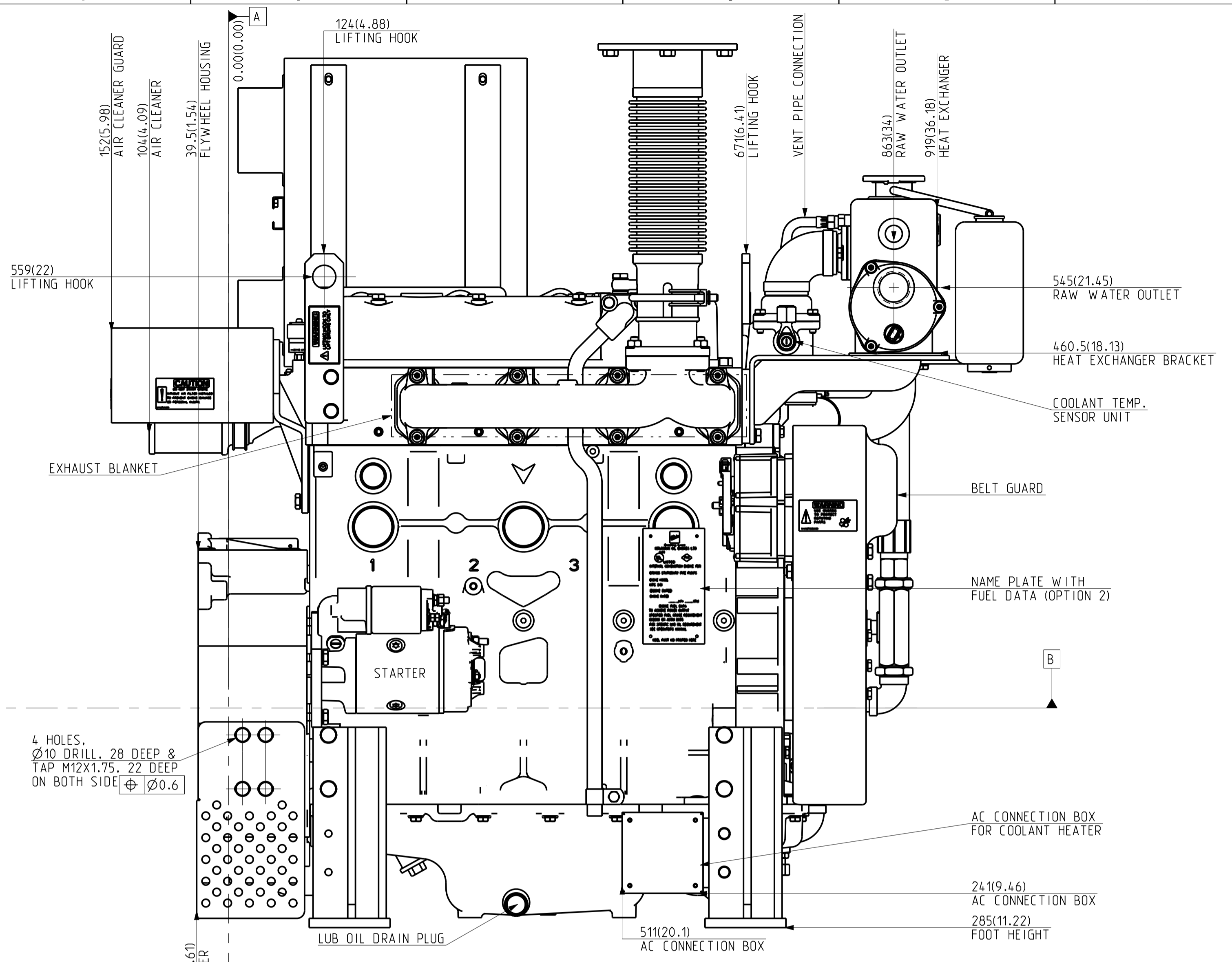
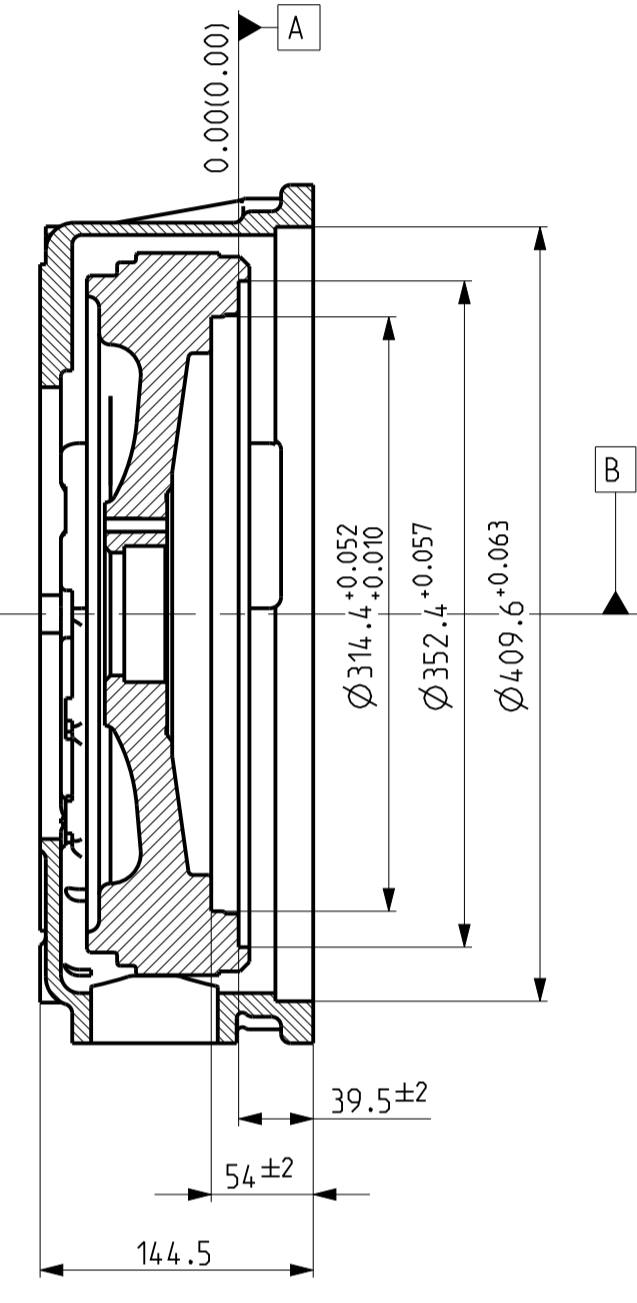
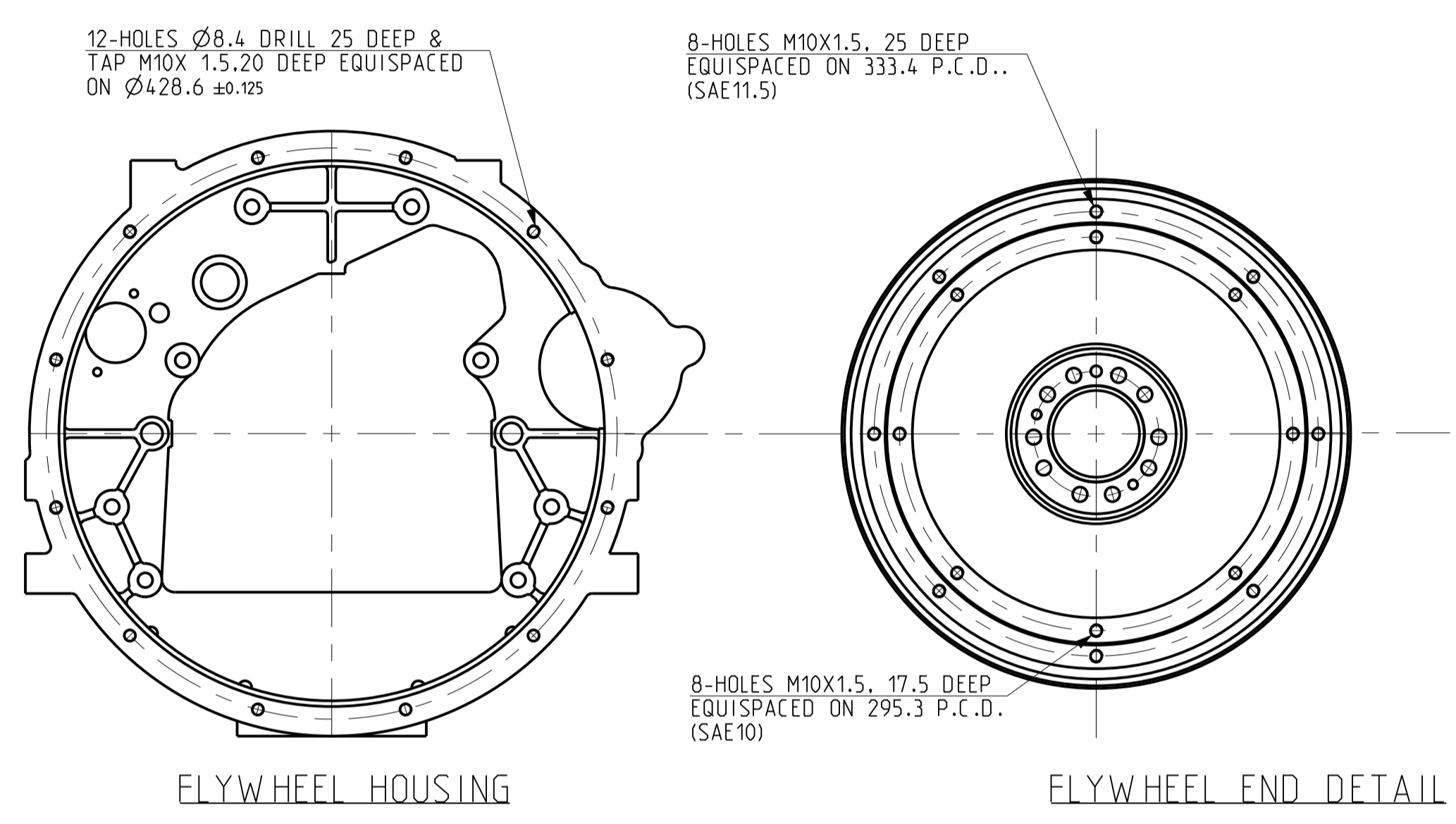
- DATUMS:-
- A MOUNTING FACE OF FLYWHEEL.
 - B ENGINE CRANKSHAFT HORIZONTAL CENTRE LINE
 - C ENGINE CRANKSHAFT VERTICAL CENTRE LINE
 - Centre of Gravity of Engine

NOTE: ALL DIMENSIONS SHOWN ARE IN MM AND IN BRACKET ARE IN INCHES.

IF IN DOUBT ASK
PRINTS OF PREVIOUS REVISION NO. SHOULD BE SCRAPPED

THIS DRAWING IS PROPERTY OF KIRLOSKAR OIL ENGINES LTD. AND MUST BE RETURNED ON REQUEST. IT IS SUBMITTED AS CONFIDENTIAL INFORMATION WITH OUR ENQUIRY, TENDER, ORDER OR CONTRACT NO. IT IS NOT TO BE ISSUED FOR ANY OTHER PURPOSE OR ORDER NOR MAY BE COPIED OR LENT WITHOUT OUR AUTHORITY IN WRITING.
FORMAT No. RBE/FORM/056/01 (REFER DDP No. RBE 4.4.03)

UNLESS OTHERWISE SPECIFIED		CAD DRG. FILE:- PLM		CASTING/FORGING DRG. NO.	
● ALL DIMENSIONS ARE IN mm.		MATERIAL :-		HEAT TREATMENT :-	
● SURFACE ROUGHNESS AS PER CO. STD. NO. 10501.		DRN MVM(MODELCAM)		WEIGHT (kg) :-	
● UNMENTIONED TOLERANCES AS PER CO. STD. NO. 19001/M.		CHD.		TYPE KFP4R-UF07	
● REMOVE ALL SHARP BURRS AND SHARP EDGES.		APPD. B. J. Dhanraj		SCALE 1:5	
● DRAWING NOT TO BE SCALED.		DATE 22/02/2017		SHT. NO 1 OF 2	
UNMENTIONED		DATE 22/02/2017		DRAWING FOR KFP4R-UF07 SERIES ENGINES.	
RADI1		KIRLOSKAR OIL ENGINES LTD., PUNE 411 003 (INDIA)		DRAWING NO. 4H.2214.00.0.00	
CHAMFER		LIFECYCLE STATE:- Released		REV. NO. 00	
UNDERCUT					



IF IN DOUBT ASK PRINTS OF PREVIOUS REVISION NO. SHOULD BE SCRAPPED

THIS DRAWING IS PROPERTY OF KIRLOSKAR OIL ENGINES LTD. AND MUST BE RETURNED ON REQUEST. IT IS SUBMITTED AS CONFIDENTIAL INFORMATION WITH OUR ENQUIRY, TENDER, ORDER OR CONTRACT NO. IT IS NOT TO BE ISSUED FOR ANY OTHER PURPOSE OR ORDER NOR MAY BE COPIED OR LENT WITHOUT OUR AUTHORITY IN WRITING.

UNLESS OTHERWISE SPECIFIED				CAD DRG. FILE:- PLM				CASTING/FORGING DRG. NO.	
● ALL DIMENSIONS ARE IN mm.				MATERIAL :-				HEAT TREATMENT :-	
● SURFACE ROUGHNESS AS PER CO. STD. NO. 10501.				DRN MVM(MODELCAM)				WEIGHT (kg) :-	
● UNMENTIONED TOLERANCES AS PER CO. STD. NO. 19001/M.				CHD.				TYPE KFP4R-UF07	
● REMOVE ALL SHARP BURRS AND SHARP EDGES.				APPD. B. S. D. S. M. S.				SCALE 1:4	
● DRAWING NOT TO BE SCALED.				DATE 22/02/2017				SHT. NO 2 OF 2	
UNMENTIONED				DRAWING FOR KFP4R-UF07 SERIES ENGINES.				DRAWING NO. REV. NO.	
RADI1				KIRLOSKAR OIL ENGINES LTD.,				4H.2214.00.0.00	
CHAMFER				PUNE 411 003 (INDIA)				00	
UNDERCUT									
No.	REVISION	ZONE	MODIFIED BY	REF. No. DATE	No.	REVISION	ZONE	MODIFIED BY	REF. No. DATE
00	PR CHANGED TO 00				1924				