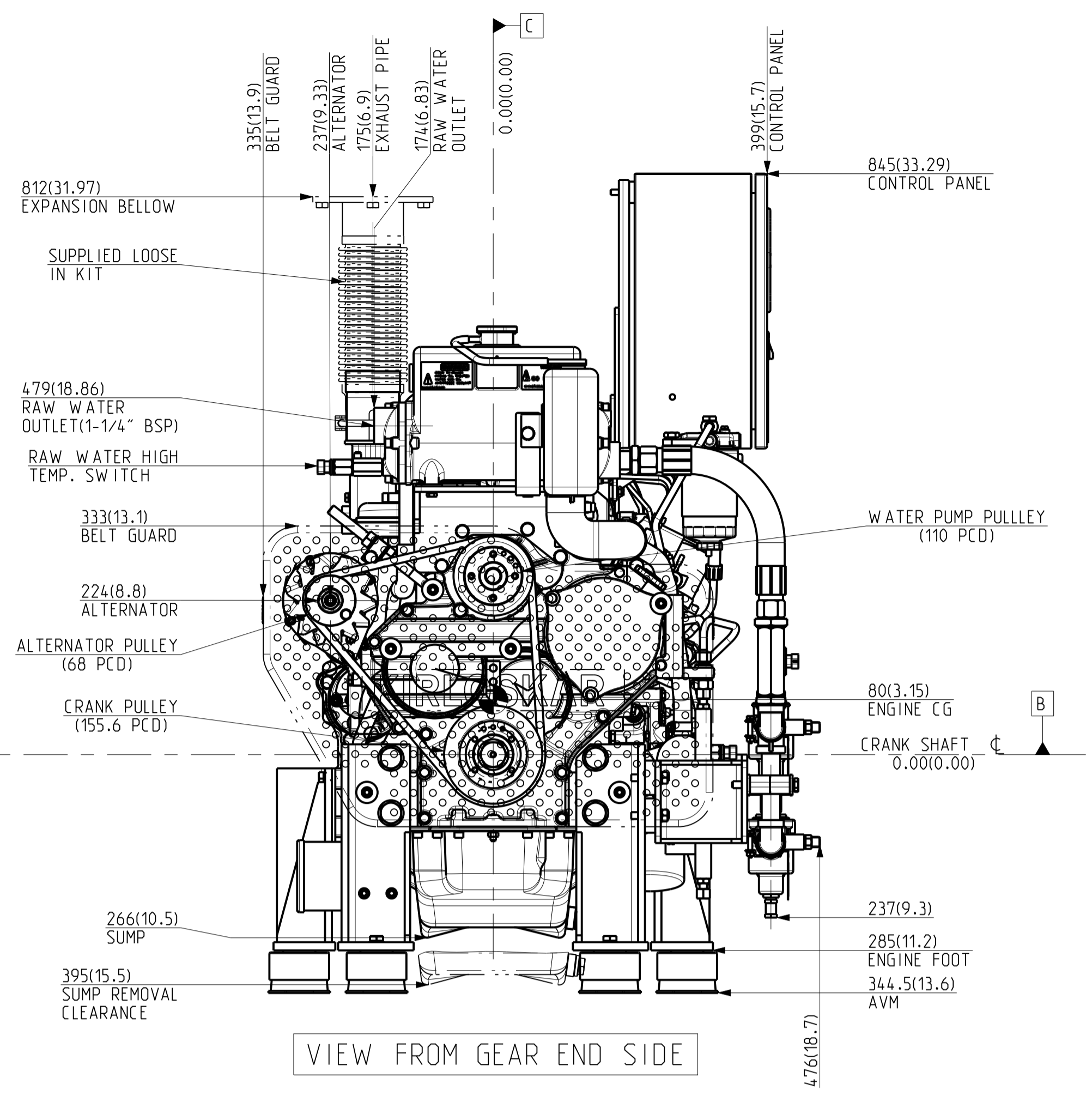
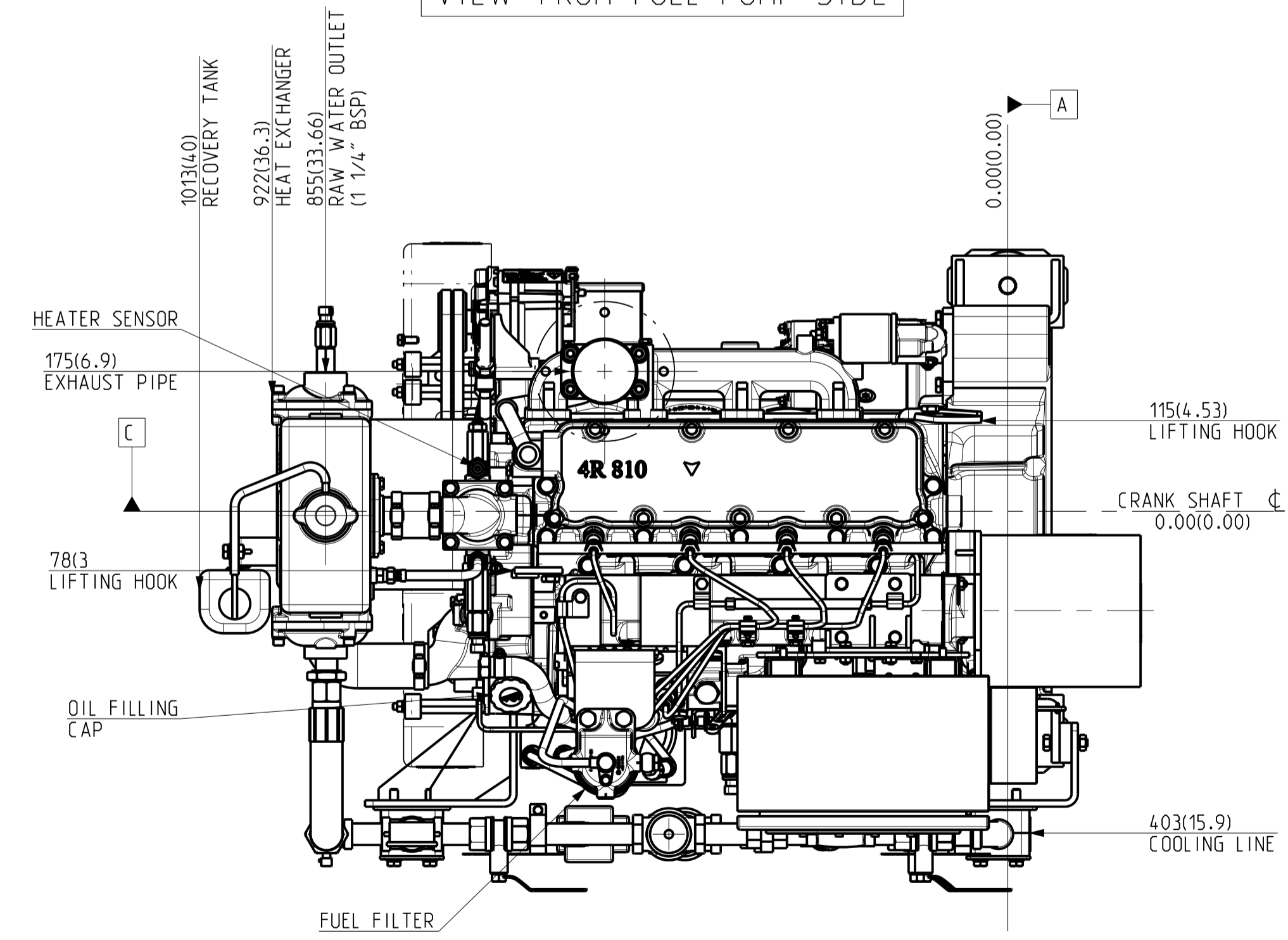


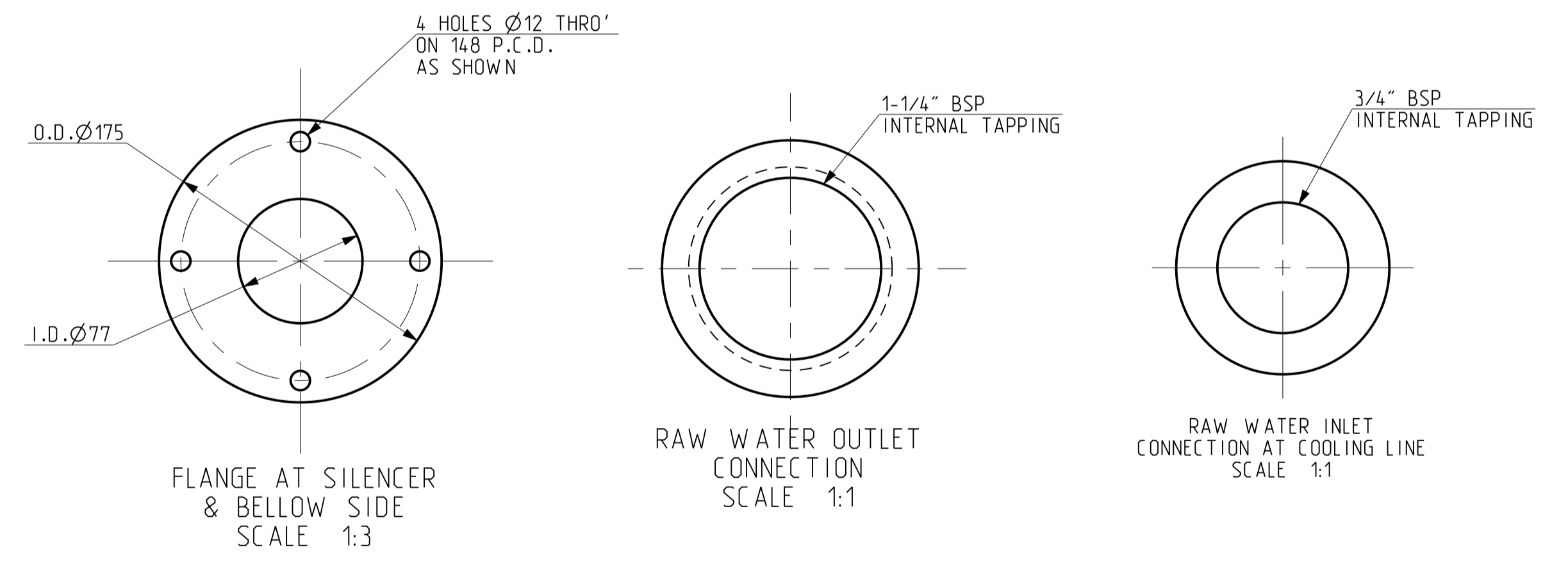
VIEW FROM FUEL PUMP SIDE



VIEW FROM GEAR END SIDE



VIEW FROM TOP SIDE



ATTENTION
 *REFER "TECHNICAL BULLETIN" PART NO. 4H.1901.01.0.00, PROVIDED ALONG WITH THE ENGINE FOR AVM INSTALLATION GUIDELINES FOR BASE ALONG WITH ENGINE.

CAUTION
 *ALL PLUMBING MUST BE SUPPORTED AND/OR ISOLATED SO THAT NO WEIGHT OR STRESS IS APPLIED TO ANY ENGINE COMPONENT.
 *BASE MUST BE FULLY GROUTED AND SECURE WITH SUITABLE ANCHOR BOLTS.

NOTES:
 *ALL DIMENSIONS SHOWN ARE IN MM AND IN BRACKET ARE IN INCHES.

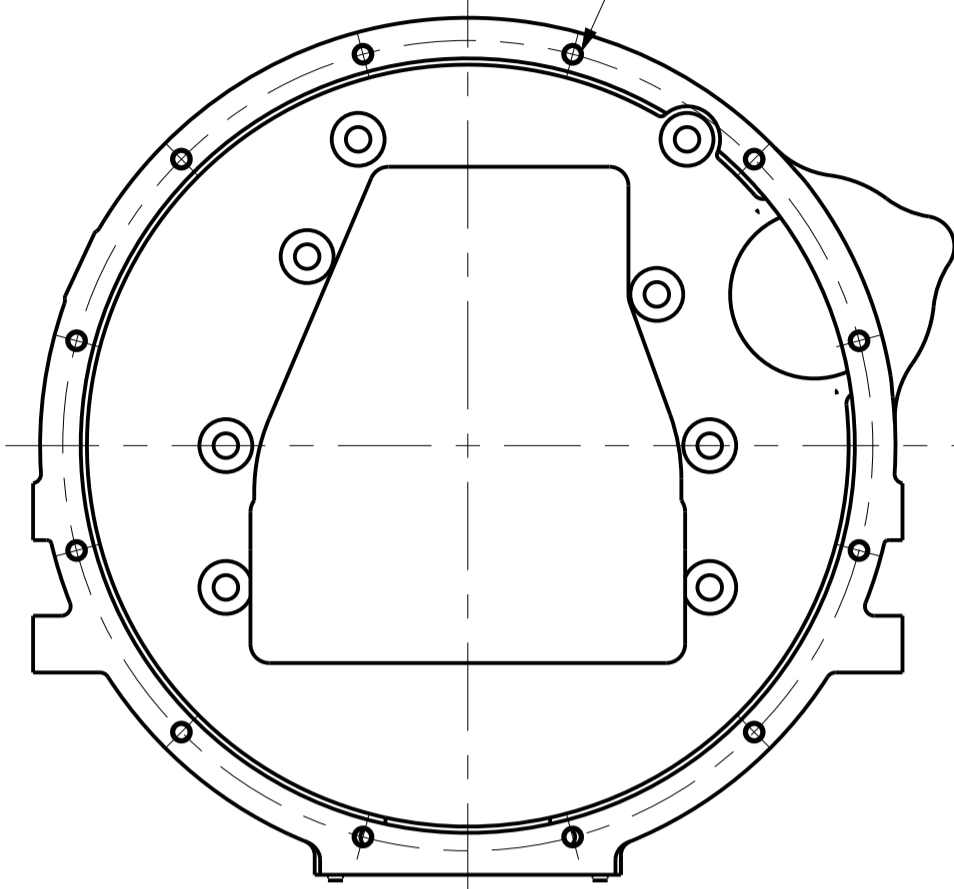
IF IN DOUBT ASK

THIS DRAWING IS PROPERTY OF KIRLOSKAR OIL ENGINES LTD. AND MUST BE RETURNED ON REQUEST. IT IS SUBMITTED AS CONFIDENTIAL INFORMATION WITH OUR ENQUIRY, TENDER, ORDER OR CONTRACT NO. IT IS NOT TO BE ISSUED FOR ANY OTHER PURPOSE OR ORDER NOR MAY BE COPIED OR LENT WITHOUT OUR AUTHORITY IN WRITING.

DATUMS:
 A MOUNTING FACE OF FLYWHEEL
 B ENGINE CRANK SHAFT HORIZONTAL CENTRE LINE
 C ENGINE CRANK SHAFT VERTICAL CENTRE LINE
 CENTER OF GRAVITY OF ENGINE

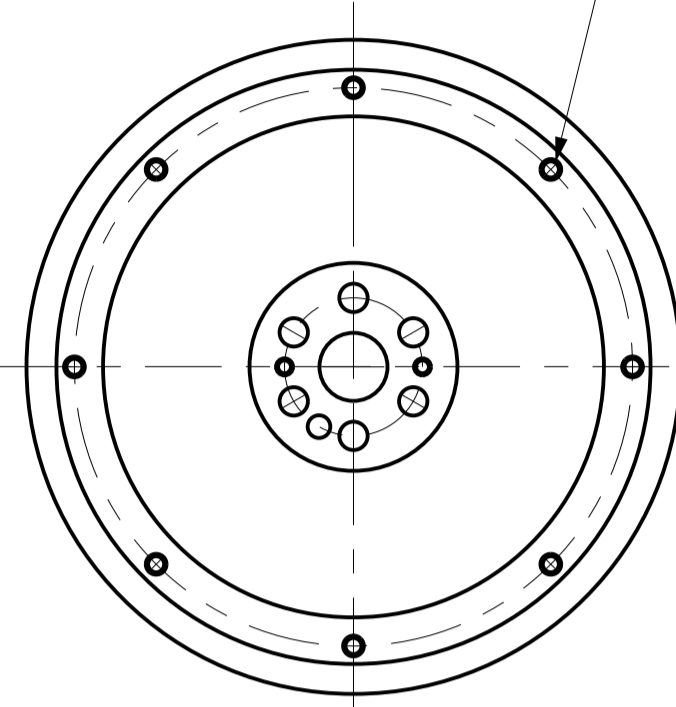
UNLESS OTHERWISE SPECIFIED				CAD DRG. FILE:- PLM				CASTING/FORGING DRG. NO.	
● ALL DIMENSIONS ARE IN mm.				MATERIAL :-				HEAT TREATMENT :-	
● SURFACE ROUGHNESS AS PER CO. STD. NO. 10501.				DRN SSG(MODELCAM)				WEIGHT (kg) :-	
● UNMENTIONED TOLERANCES AS PER CO. STD. NO. 1901VM.				CND.				---	
● REMOVE ALL SHARP BURRS AND SHARP EDGES.				APPD. B. P. Dashmukh				TITLE	
● DRAWING NOT TO BE SCALED.				DATE 13/04/2017				ENGINE INSTALLATION	
UNMENTIONED				DATE 13/04/2017				DRAWING FOR KFP4R-UF05 SERIES ENGINES.	
RADII				CHAMFER				SCALE 1:6	
UNDERCUT				KIRLOSKAR OIL ENGINES LTD., PUNE 411 003 (INDIA)				SHT. NO 1 OF 2	
01 ENGINE FOUNDATION LAYOUT MODIFIED				00 NEW RELEASE				DRAWING NO. T4.2427.00.0.00	
01 ENGINE FOUNDATION LAYOUT MODIFIED				00 NEW RELEASE				REV. NO. 01	
01 ENGINE FOUNDATION LAYOUT MODIFIED				00 NEW RELEASE				LIFECYCLE STATE:- Released	

12 HOLES Ø8.4 DRILL 25 DEEP
& TAP M10X1.5, 22 DEEP EQUISPACED
ON 428.6 ±0.125 PCD

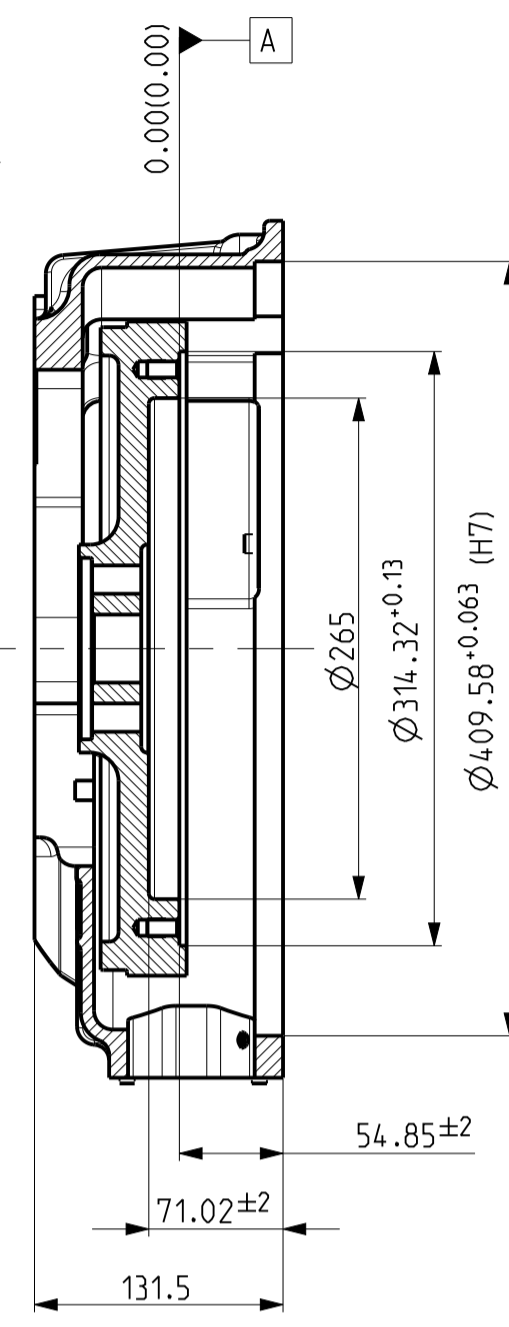


FLYWHEEL HOUSING

8 HOLES Ø8.4 DRILL, 22 DEEP
& TAP M10X1.5, 17 DEEP
EQUISPACED ON 295.3 PCD.

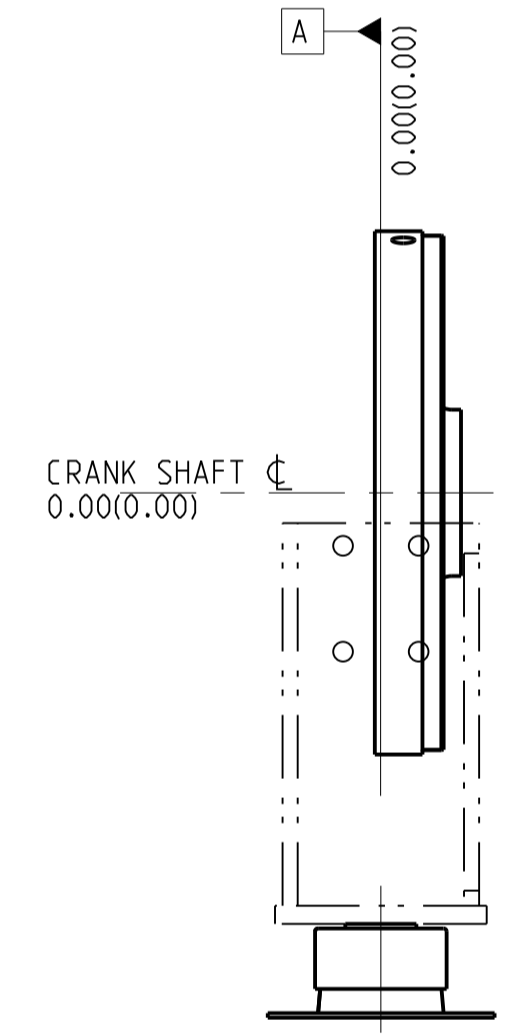


FLYWHEEL END DETAIL

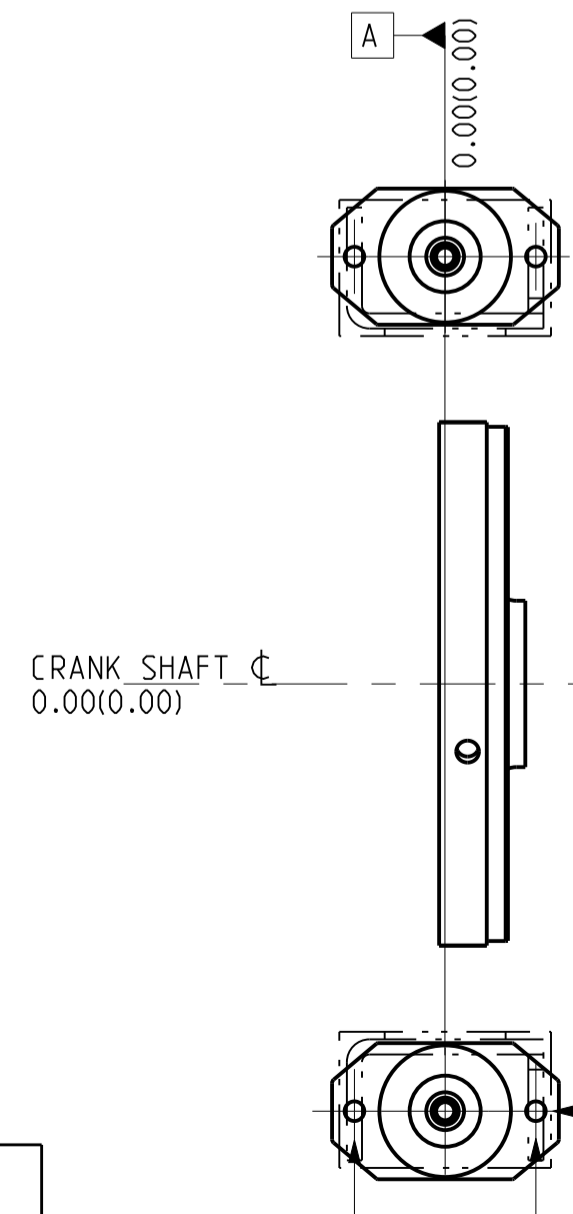
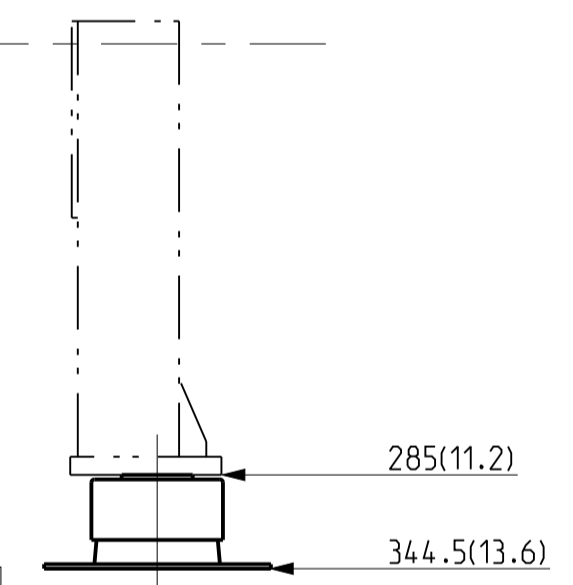


SECTION A-A
SCALE 1:4

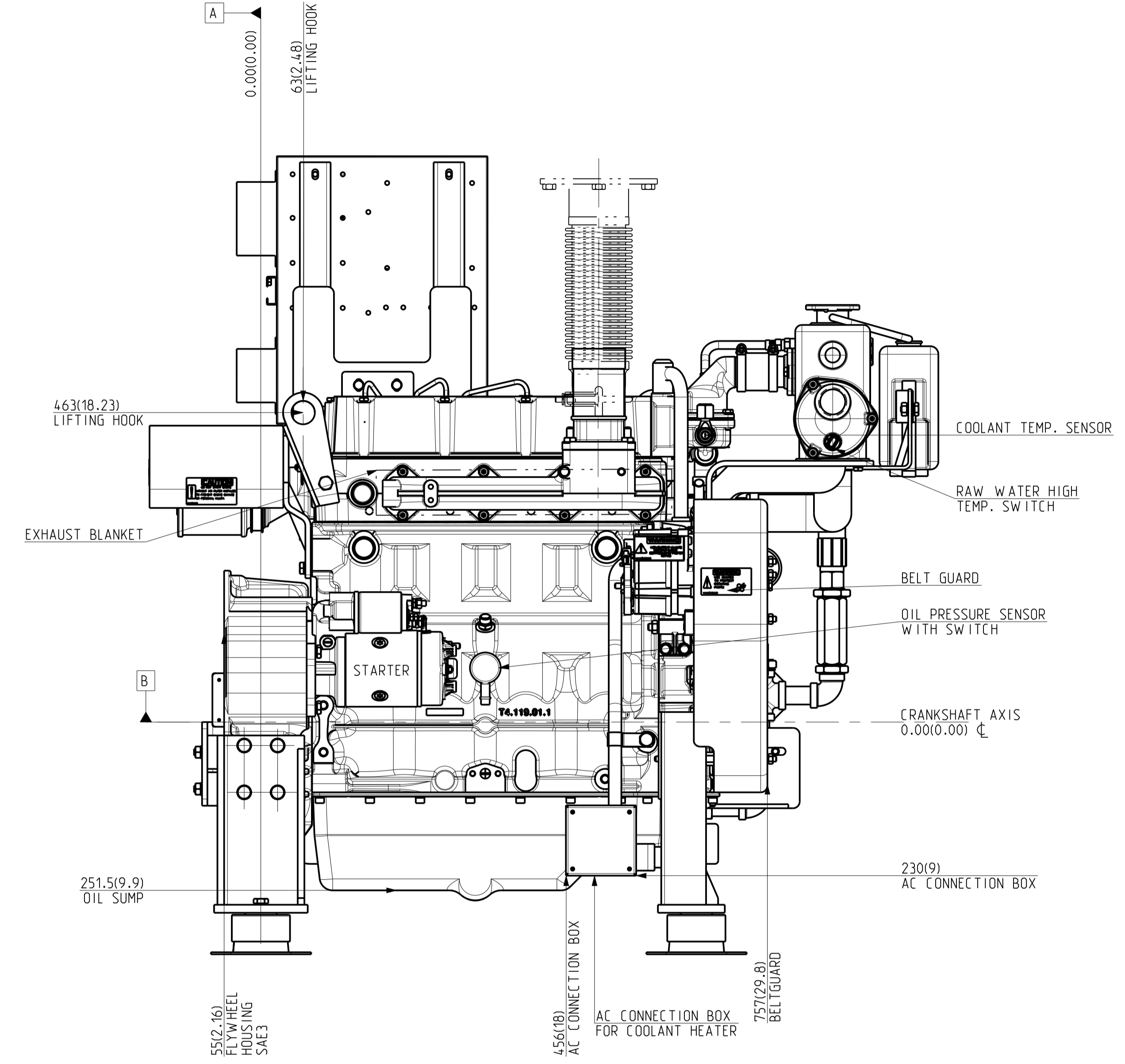
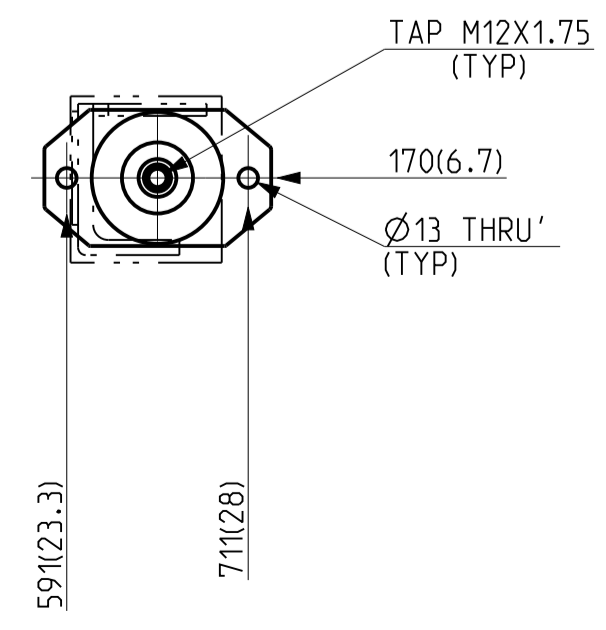
0.00(0.00) ⌀
CRANK SHAFT AXIS



FOUNDATION FRONT VIEW



FOUNDATION PLAN VIEW



VIEW FROM EXHAUST SIDE

NOTES:
*ALL DIMENSIONS SHOWN ARE IN MM
AND IN BRACKET ARE IN INCHES.

IF IN DOUBT ASK PRINTS OF PREVIOUS REVISION NO. SHOULD BE SCRAPPED

THIS DRAWING IS PROPERTY OF KIRLOSKAR OIL ENGINES LTD. AND MUST BE RETURNED ON REQUEST. IT IS SUBMITTED AS CONFIDENTIAL INFORMATION WITH OUR ENQUIRY, TENDER, ORDER OR CONTRACT NO. IT IS NOT TO BE ISSUED FOR ANY OTHER PURPOSE OR ORDER NOR MAY BE COPIED OR LENT WITHOUT OUR AUTHORITY IN WRITING.
FORMAT No.RBE/FORM/056/01 (REFER DOP No. RBE 4.4.03)

ATTENTION
*REFER "TECHNICAL BULLETIN" PART NO. 4H.1901.01.0.00, PROVIDED ALONG WITH THE ENGINE FOR AVM INSTALLATION GUIDELINES FOR BASE ALONG WITH ENGINE.

CAUTION
*ALL PLUMBING MUST BE SUPPORTED AND/OR ISOLATED SO THAT NO WEIGHT OR STRESS IS APPLIED TO ANY ENGINE COMPONENT.
*BASE MUST BE FULLY GROUTED AND SECURE WITH SUITABLE ANCHOR BOLTS.

UNLESS OTHERWISE SPECIFIED				CAD DRG. FILE:-				PLM		CASTING/FORGING DRG. NO.	
● ALL DIMENSIONS ARE IN MM.				MATERIAL :-				HEAT TREATMENT :-		WEIGHT (kg) :-	
● SURFACE ROUGHNESS AS PER CO. STD. NO. 10501.				DRN SSG(MODELCAM)				TITLE		TYPE KFP4R-UF05/KFP4R-FM0501	
● UNMENTIONED TOLERANCES AS PER CO. STD. NO. 1901VM.				CHD.				ENGINE INSTALLATION		SCALE 1:5	
● REMOVE ALL SHARP BURRS AND SHARP EDGES.				APPD. B.P. Dushmabh				DRAWING FOR KFP4R-UF05 SERIES ENGINES.		SHT. NO 2 OF 2	
● DRAWING NOT TO BE SCALED.				DATE 13/04/2017						REV. NO.	
UNMENTIONED				DATE 13/04/2017						DRAWING NO.	
01 ENGINE FOUNDATION LAYOUT MODIFIED				SSG 20760 21/03/2018				KIRLOSKAR OIL ENGINES LTD..		PUNE 411 003 (INDIA)	
00 NEW RELEASE				14-03-2017 28/04/2017				T4.2427.00.0.00		01	
No.	REVISION	ZONE	MODIFIED BY	REF. No.	No.	REVISION	ZONE	MODIFIED BY	REF. No.	No.	
				DATE					DATE		