



Enriching Lives

Kirloskar KFP Series Engines For Fire Pumps FM Approved & UL Listed





Contents:

1. FM/UL Approved Power rating
2. Typical Features of FM/UL Approved engines
3. Fuel system
4. Cooling system
5. Instrumentation

FM/UL Approved Power rating



Enriching Lives

Sr. No.	Kirloskar FM/UL Approved Engine Model	Engine Speed	Rated Power
		RPM	BHP
1	KFP4R-UF07	1760	62
		2100	70
		2200	74
		2350	74
		2600	77
2	KFP4R-UF15	1760	108
		2100	111
		2200	117
		2350	143
		2600	151
3	KFP6R-UF25	1760	169
		2100	191
		2200	196
		2350	203
		2600	225
4	KFP6S-UF35	1760	288
		2100	336
		2200	332
		2350	330

Up Coming Power ratings..



Enriching Lives

Sr. No.	Kirloskar Engine Model	Engine Speed	Rated Power
		RPM	BHP
1	KFP4R-UF05	2900	30 / 40 / 50 / 60
2	KFP4R-UF08	2800	70 / 80
		2900	71
		3000	71 / 83
3	KFP4R-UF16	2800	104 / 145
		2900	87 / 118 / 128
		3000	115 / 145 / 151
4	KFP6R-UF26	2800	160 / 216
		2900	186 / 225
		3000	175 / 216 / 225 / 250

**Currently
being offered as
Non-Listed**



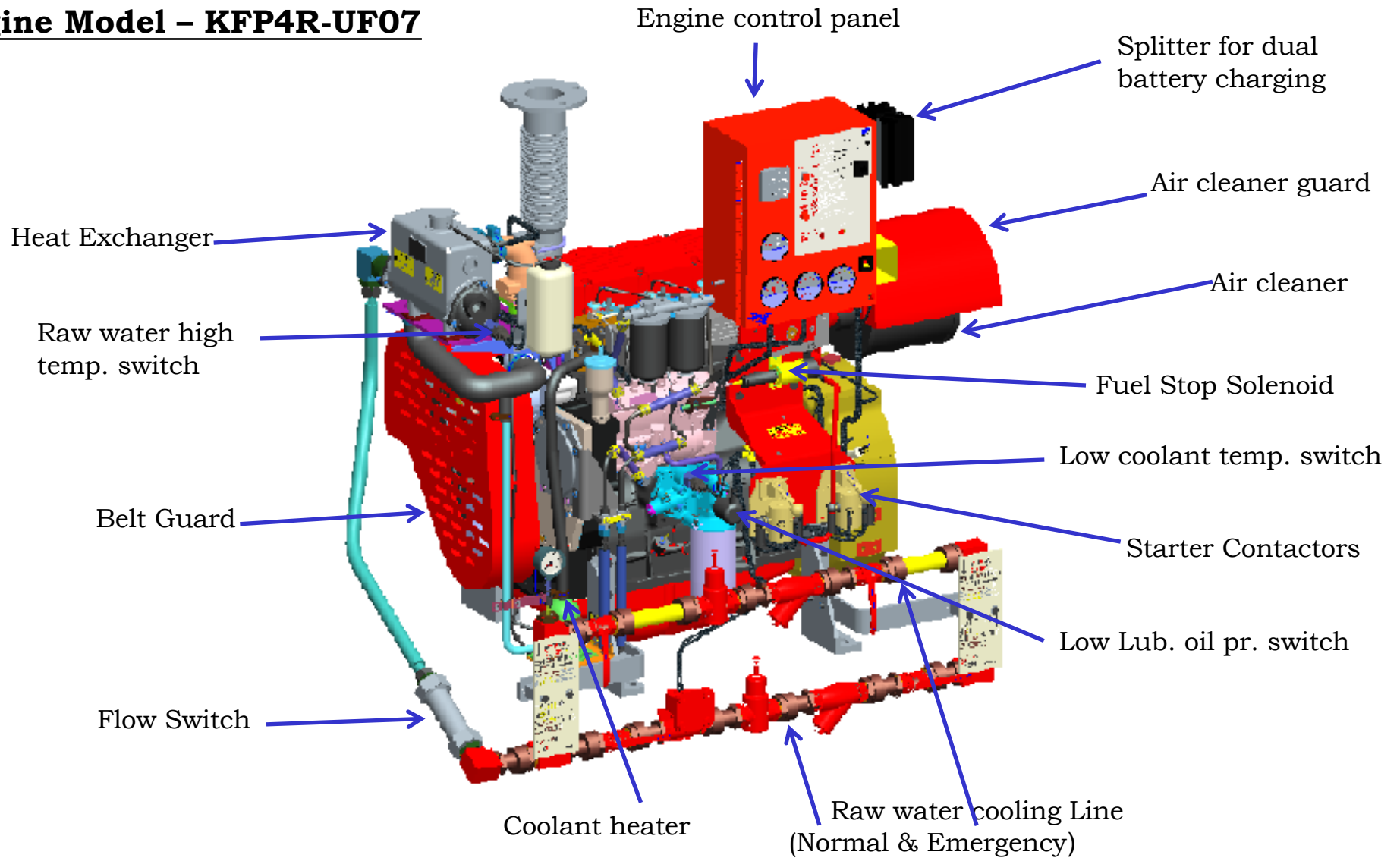
Typical Features

- Heat exchanger for Engine coolant
- Water Cooled Charge Air cooler for After-cooled engine models
- FM approved Cooling Loop with Flow switch, Raw water solenoids, manual valves in main & emergency lines as per NFPA 20 requirements
- Engine mounted Instrument Panel duly isolated from vibration
- Junction Box Integral with Instrument Panel for AC Wiring
- Engine coolant heater
- Engine High coolant temp. switch, Low coolant temp. switch, Raw water high temp. switch, Low lub. oil pressure switch & Over speed shut down.
- Dual Starter Contactors (DC)
- Splitter for splitting the charging current coming from alternator to dual battery
- Electronic speed controller
- Heat shield on Exhaust Manifold, Turbo Charger & CAC Pipes
- Fire Resistant Flexible Supply & Return Lines in Fuel connections



Typical Features

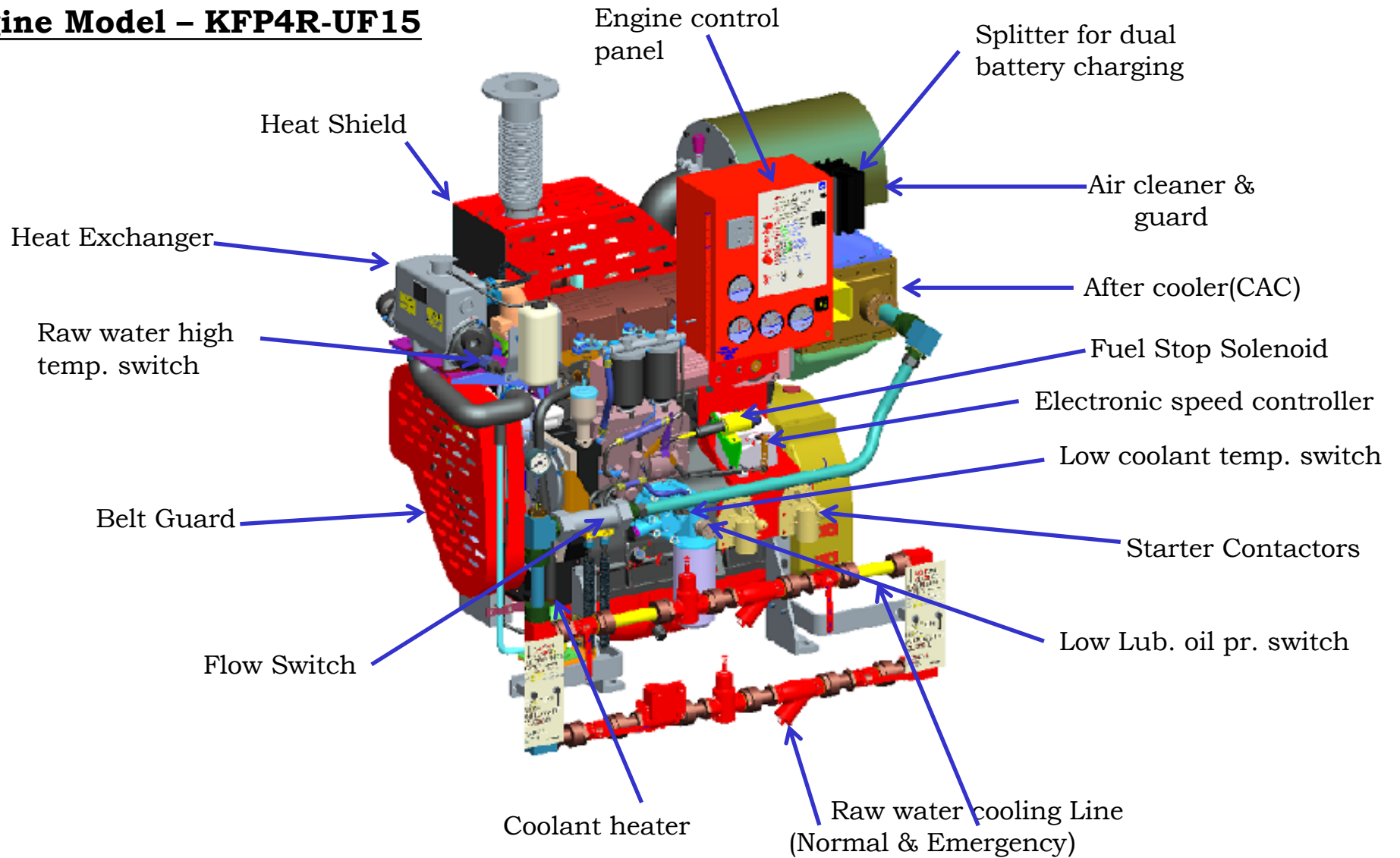
Engine Model – KFP4R-UF07





Typical Features

Engine Model – KFP4R-UF15

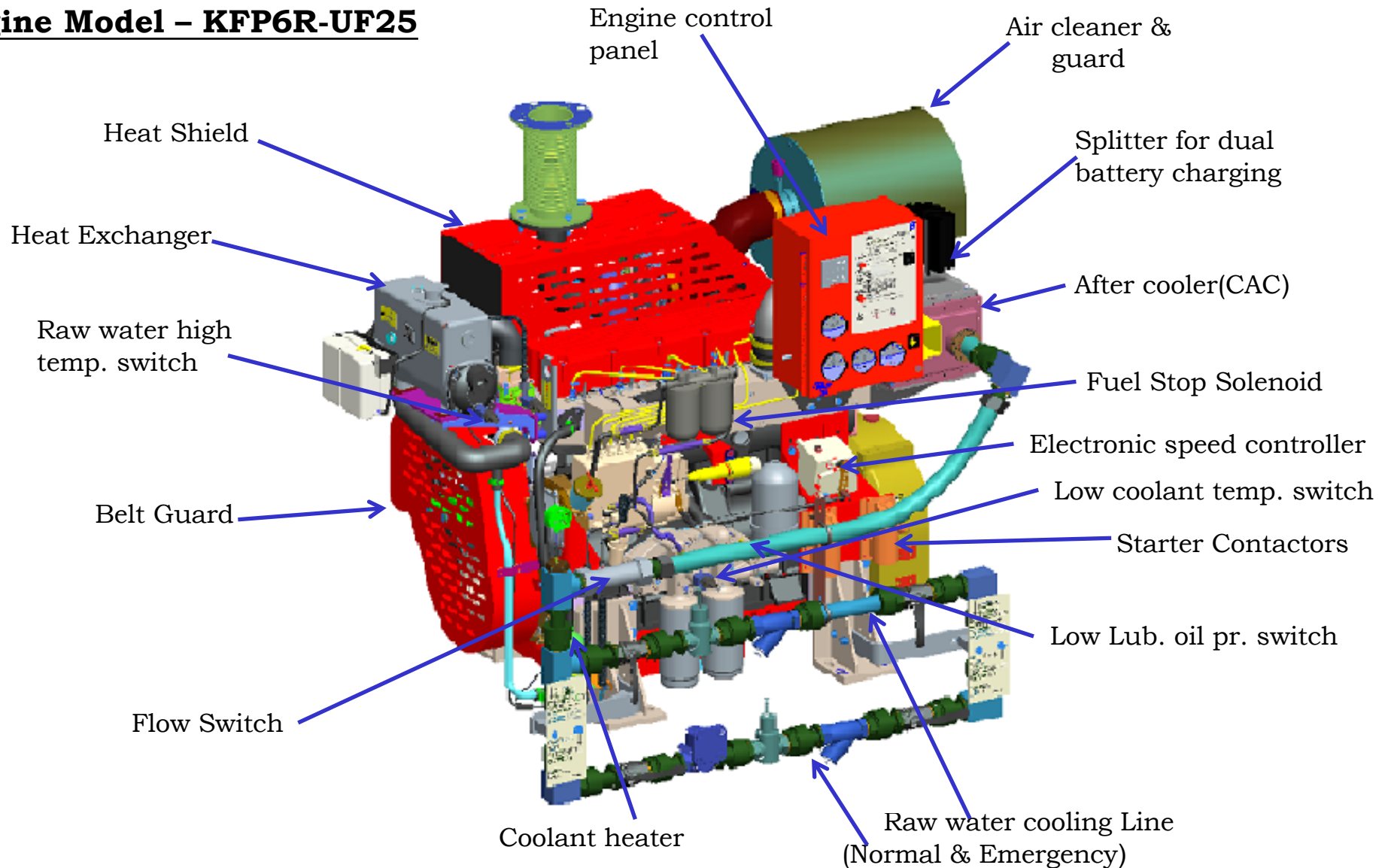


Typical Features



Enriching Lives

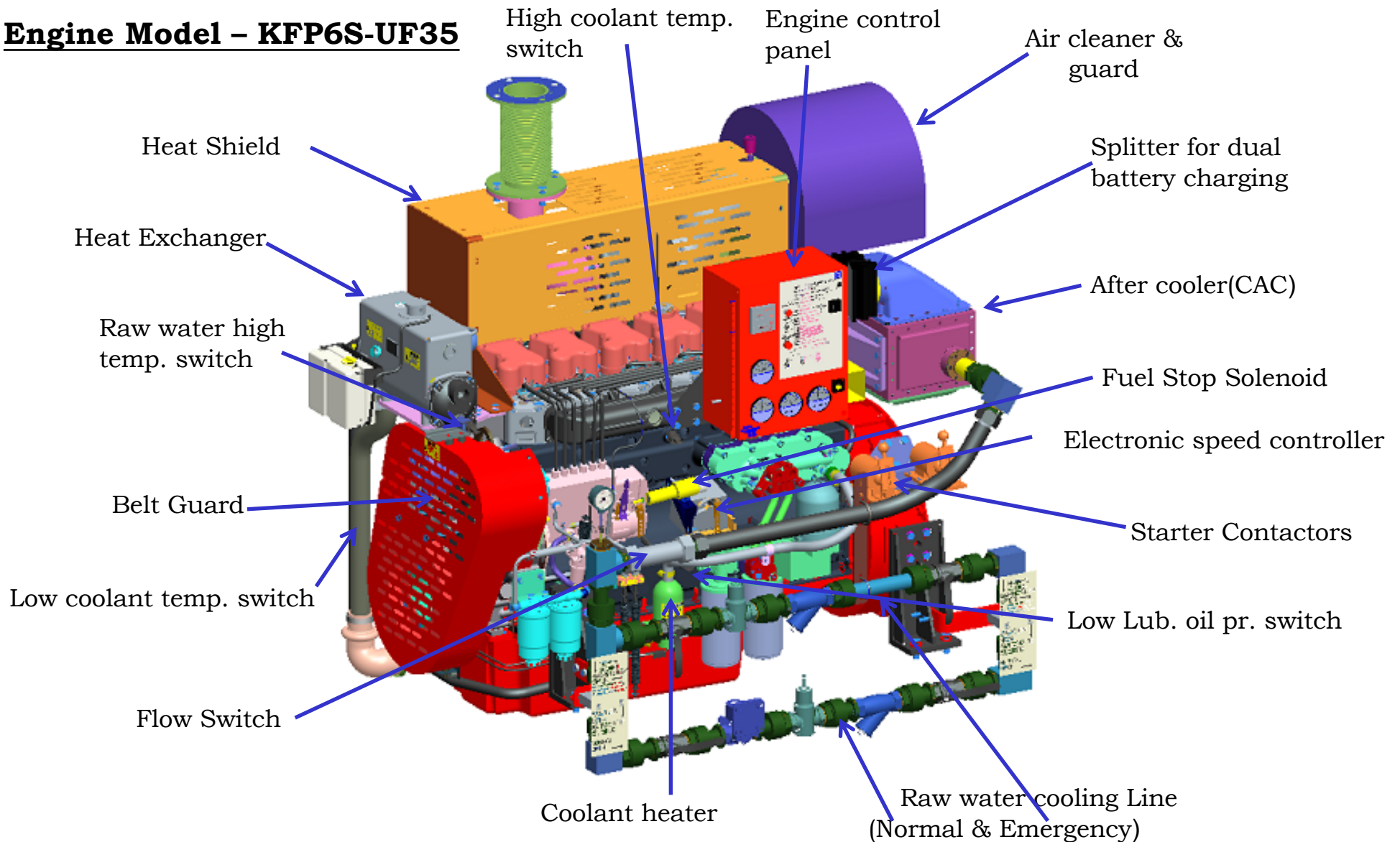
Engine Model – KFP6R-UF25





Typical Features

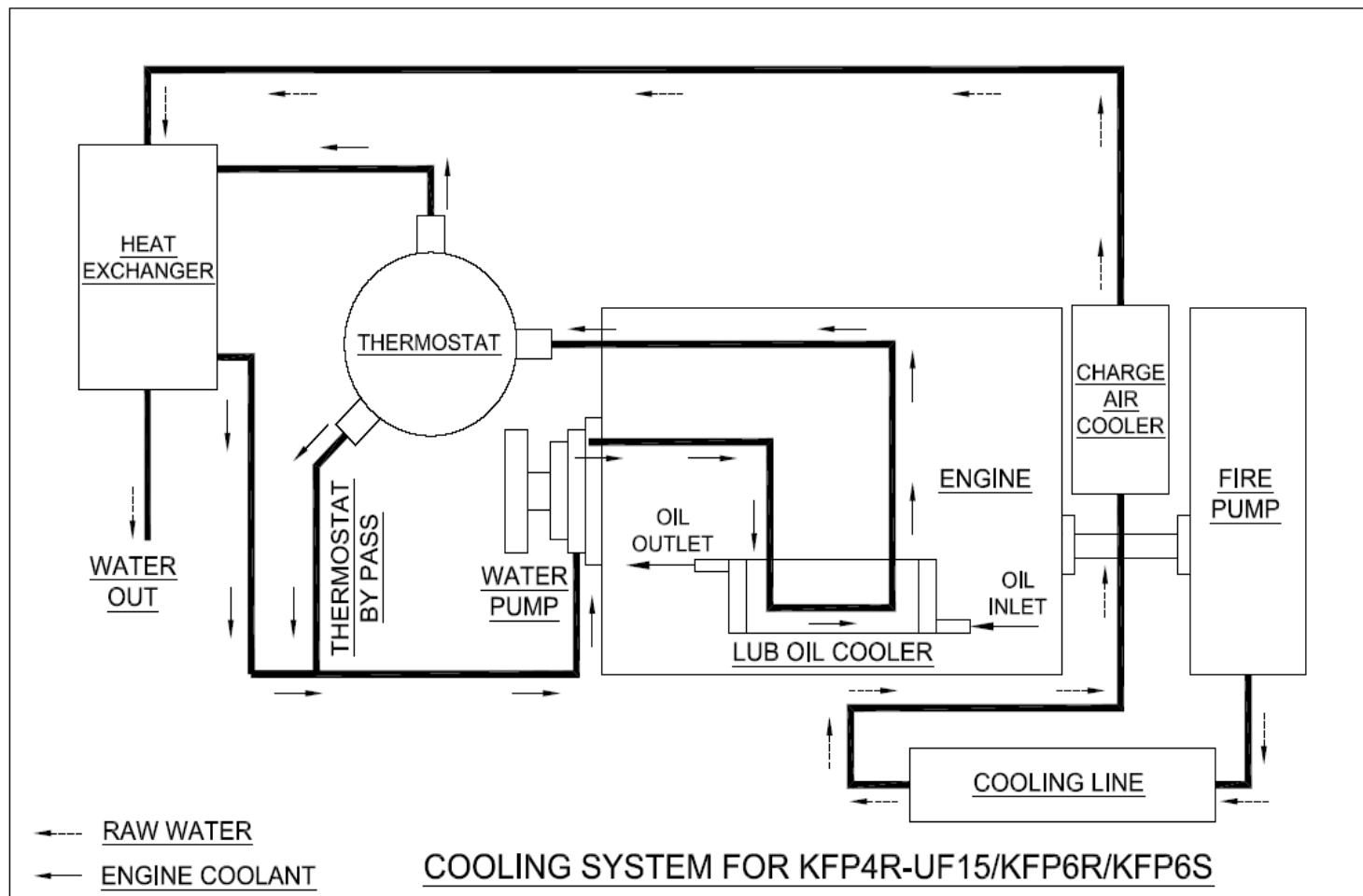
Engine Model – KFP6S-UF35



ENGINE COOLING SYSTEM

Heat exchanger type cooling system:

- The Schematic diagram of the typical water circuit with Heat exchanger type cooling for turbocharged with after-cooled engines is shown below:



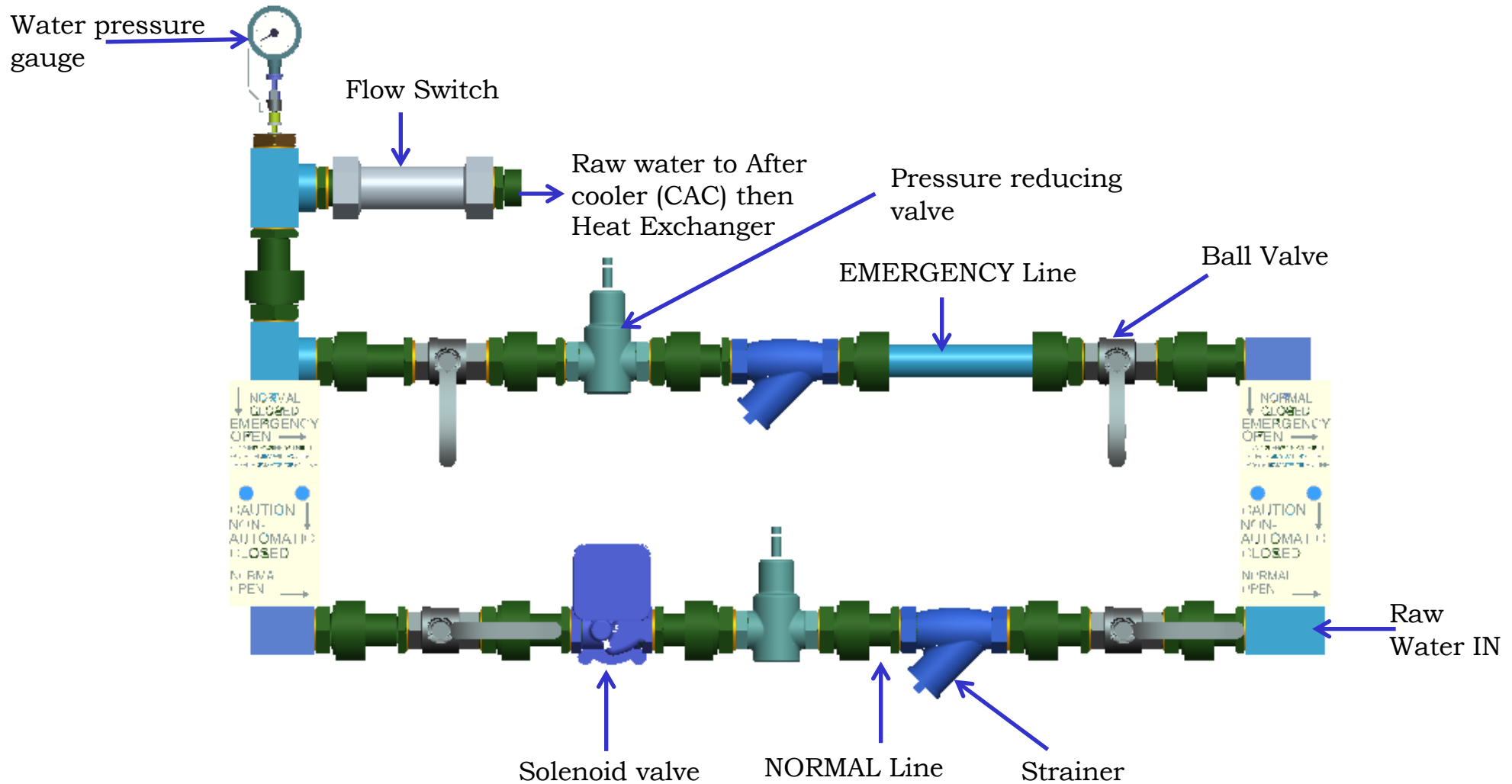
ENGINE COOLING SYSTEM



Enriching Lives

Cooling Line Layout :

- The typical Raw water flow diagram with Heat exchanger type cooling is shown below:



INSTRUMENTATION



Enriching Lives

- The instrument panel is Engine mounted and is fitted on Anti Vibration Mounts
- The instrument Panel consists of the following:
 - Tachometer & Hour-meter
 - Voltmeters (2)
 - Water Temperature Gauge
 - Oil Pressure Gauge
 - Over Speed Indication lamp
 - Auto / Manual modes
 - Auto Mode Warning lamp
 - Manual Crank toggle switches (2)
 - Manual Stop toggle switch